

90th Annual
HURON COUNTY

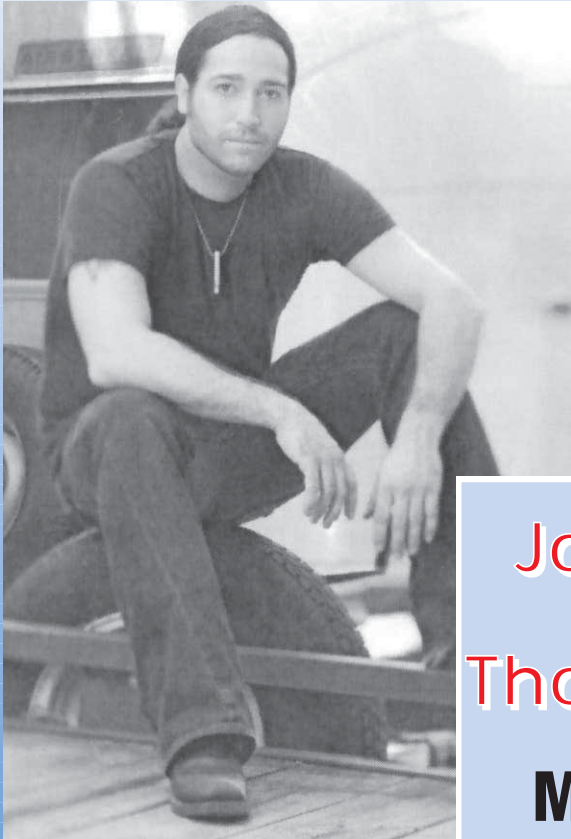


AUGUST

15-20, 2011

940 Fair Road,
Norwalk, Ohio

419-668-0516



Josh Thompson
&
Thompson Square

Monday at 7:00 PM

GRANDSTAND SHOWS

MONDAY

Josh Thompson &
Thompson Square

TUESDAY

Cheer Bonanza

WEDNESDAY

OSTPA Tractor Pull (With Semis)

THURSDAY

Motocross Races

FRIDAY

Rough Truck

SATURDAY

Demolition Derby



www.huroncountyfair.com

HURON COUNTY FAIR SCHEDULE

(Junior Fair Schedule on Page 45)

MONDAY August 15

**Sponsor Northern Ohio Rural Water
Sponsor Kasper Chevrolet Buick Norwalk**

- 8:00 A.M. Fair Opens (Entries must be in place)
Floriculture Exhibit Check-In Begins - Home Arts Building
- Foods (Baking) Check-In Begins - Home Arts Building
- 9:00 A.M. Clothing & Home Furnishing Judging - Home Arts Building
- Cloverbud Interview (specific times scheduled) - South End of FSC Building
- 9:30 A.M. Heritage Center Opens
Floriculture Exhibit Deadline - Home Arts Building
- 10:00 A.M. Floriculture Oral Judging for Specimens, Plants and Containers - Home Arts Building
- Pony Judging Classes A-F and G (9-11) - Weisenberger Arena
- 12:00 P.M. Foods (Baking) Exhibit Deadline - Home Arts Building
- Farm and Garden Products Judging - Home Arts Building
- Horticulture Judging - Home Arts Building
- 1:00 P.M. Food Judging - Canning, Baking (A-L) Home Arts Building
- Hay & Silage Show - Agronomy Building
- 2:00 P.M. Dairy Silent Auction Begins
- 4:00 P.M. Horse King and Queen Crowning - Veterans Pavilion
- 6:00 P.M. Junior Fair FCS Revue (Style Review and Awards, Demonstration Awards, and Foods Awards) -G.A. Pickworth Judging Pavilion
- 7:00 P.M. Open Steer, Market Heifer, Feeder Heifer, Feeder Calf Show - Wilson Building
- Josh Thompson & Thompson Square - Grandstand

TUESDAY August 16

**Sponsor Mercy Hospital Willard
KID'S DAY - FREE DAY
FREE ADMISSION UNTIL 3:00 PM
(Rides not included)**

- 8:00 A.M. Rabbit Judging - Rabbit Barn
- Floriculture Arrangement Check-In Begins - Home Arts Building
- 9:00 A.M. Bee Judging - Home Arts Building
- 9:30 A.M. Heritage Center Opens
- 11:00 A.M. Huron County Commissioners Meeting - Ag Heritage Area Barn
- SBSAO (School Bus Safety Organization) Display with "Buster the Bus"
- "Teddy Trooper" Sponsored by the Ohio Troopers Coalition
- 12:00 P.M. Kiddie Tractor Pull - Site to be announced
- 1:00 P.M. Children's Day Activities Begin - Site to be announced
- 6:00 P.M. Re/Max Hot Air Balloon -(Weather Permitting) Infield
- 6:30 P.M. Junior Fair King & Queen Contest - Pickworth Judging Pavilion
- Cheer Bonanza - Grandstand
- CMFSC Pie Auction - Pickworth Judging Pavilion
- 8:30 P.M. Square Dance - Pickworth Judging Pavilion

WEDNESDAY August 17

**VETERAN'S DAY
VETERAN'S ADMISSION 1 PENNY**

- 8:00 A.M. Floriculture Arrangement Check-In Begins - Home Arts Building
- 9:00 A.M. Poultry Judging - Poultry Barn
- Beef Judging - Pickworth Judging Pavilion
- Heritage Center Opens
- 9:30 A.M. Floriculture Arrangements & Wreaths Judging - Home Arts Building
- 10:00 A.M. Floriculture Arrangements & Wreaths Judging - Home Arts Building
- 12:00 P.M. Special Breads Exhibit Deadline- Home Arts Building
- 1:00 P.M. Special Bread Judging - Home Arts Building
- Sheep Judging (Immediately following Jr. Fair Sheep Show) - Wilson Building
- 4:00 P.M. Massing of Colors - Veteran's Pavilion
- 6:30 P.M. OSTPA Tractor Pull with Semi's - Grandstand
- 7:00 P.M. Pony Pull - Weisenberger Arena

THURSDAY August 18

**SENIOR CITIZENS DAY
SENIOR CITIZEN ADMISSION-Willard Health Care**

- 9:00 A.M. Horse Judging - Pickworth Judging Pavilion
- 9:30 A.M. Heritage Center Opens
- 10:30 A.M. Pony Judging Classes G (1-8) and H - Weisenberger Arena
- Senior King and Queen Contest - Veteran's Pavilion
- 11:00 A.M. Nursing Home Special Foods Judging - Home Arts Building
- 1:00 P.M. Draft Horse Hitch Classes (Alternating with Pony Hitch Classes) - Weisenberger Arena
- 2:00 P.M. Senior Bingo - All Seniors Invited - Veteran's Pavilion
- 4:00 P.M. "Back to the Farm" Feeder Calf Sale - Doug Wilson Building - GA Pickworth Auctioneer
- Guys & Gals Sheep Lead - Entry deadline -Open Class Pee Wee 3 to 8 years old as of Jan. 1, 2011 -Open Class pairs 3 to 18 years old as of Jan. 1, 2011
- 5:30 P.M. Small Livestock Sale Champion Pictures - Pickworth Judging Pavilion
- 6:00 P.M. Small Livestock Sale: Feeder Calves, Rabbits, Chickens, Turkeys and Goats - Pickworth Judging Pavilion - G.A. Pickworth Auctioneer
- 7:00 P.M. Motocross Races - Grandstand

FRIDAY August 19

- 9:00 A.M. Girl Scout Badge Clinic - Veteran's Pavilion
- Dairy Judging - Pickworth Judging Pavilion
- 9:30 A.M. Heritage Center Opens
- 11:30 A.M. Pee Wee Sheep Showmanship- Open to anyone too young for 4-H -Wilson Building
- 1:00 P.M. Lamb Team Fitting Contest - Wilson Building
- 3:00 P.M. Guys & Gals Sheep Lead, Classes for ages 3-18, Wilson Building
- 3:30 P.M. Guys & Gals Sheep Lead Show - Wilson Building
- 4:00 P.M. Large Livestock Sale Champions Pictures - Pickworth Judging Pavilion
- 4:30 P.M. Best Dressed Animal Contest - Doug Wilson Building
- 5:00 P.M. Showman of Showmen Contest - Doug Wilson Building
- 6:00 P.M. Sheriff's K-9 Demonstration - East end of Jr. Fair Dairy Building
- 6:30 P.M. Rough Truck/Car Competition - Grandstand
- 7:30 P.M. Square Dance - Ag Heritage Area

**SATURDAY
August 20**

SPONSOR SHARPNACK CHEVROLET WILLARD

- 7:00 A.M. Rooster Crowing Contest - Pickworth Judging Pavilion
- 8:00 A.M. Board of Directors Election Begins - Secretary's Office
- 9:00 A.M. Large Livestock Sale: Hogs, Beef Cattle, Dairy and Lambs - Pickworth Judging Pavilion - G.A. Pickworth Auctioneer
- 9:30 A.M. Heritage Center Opens
- 1:00 P.M. Board of Directors Election Ends - Secretary's Office
- 4:00 P.M. Dairy Silent Auction Ends
- 6:00 P.M. Demolition Derby - Grandstand
Barn Dance - Open to the Public - Ag Heritage Area

**SUNDAY
August 21**

- 8:00 A.M. Fair Exhibits Released
- 10:00 A.M. All Tents Will Be Taken Down
- 1:00 P.M. Release Deadline

**HURON COUNTY
COMMISSIONERS MEETING**

**Tuesday, August 16 at 11:00 A.M.
Ag Heritage Area - Barn**

WEST PARKING LOT

Parking Decals will be issued and must be mounted in the upper left corner of windshield.

Any family requiring more than 1 decal (they will be available on a limited basis) must buy them at \$35.00 each at the Secretary's Office prior to the Fair.



**WINTER
STORAGE**

**Watch for our
newspaper ads or
call the Fair
Secretary's Office at
419-668-0516**



CMFSC PIE AUCTION

**Tuesday
During the Junior Fair King & Queen Contest
Proceeds go for Fair Building Improvements**

**HURON COUNTY FAIR
Ticket Information**

MEMBERSHIP TICKET.....\$22.00 Thru Aug. 15, 2011

County Residents Only - None sold after Monday
This ticket admits one person and provides
privilege of exhibiting for premiums
and full voting powers in the Society.
DOES NOT INCLUDE RIDES.

**SEASON TICKET.....\$22.00 Thru Aug. 14, 2011
\$25.00 Aug. 15-20, 2011**

DOES NOT INCLUDE RIDES.

GATE ADMISSION.....\$7.00

INCLUDES RIDES AND GRANDSTAND
EXCEPT MONDAY, AUGUST 16

CHILDREN UNDER 36" TALL.....FREE*

*DOES NOT INCLUDE RIDES.

**RIDES WITH MEMBERSHIP, SEASON, 4-H, OR
CONCESSION TICKETS.....\$5.00**

FREE ADMISSION UNTIL 3 P.M.....Tuesday

DOES NOT INCLUDE RIDES.

VETERANS DAY

Admission 1¢ (1 Penny) to all vets

.....Wednesday

DOES NOT INCLUDE RIDES.

SENIOR CITIZENS - AGE 60 AND OVER

Admission 1¢ (1 Penny).....Thursday

**GRANDSTAND
ADMISSION CHARGES**

	GENERAL	BOX	TRACK/PIT
JOSH THOMPSON & THOMPSON SQUARE	\$12.00	\$16.00	\$20.00
CHEER BONANZA	FREE		
OSTPA TRACTOR PULL	FREE	\$5.00	\$5.00
MOTOCROSS & QUAD RACES	FREE	\$5.00	\$5.00
ROUGH TRUCK	FREE	\$5.00	\$5.00
DEMO DERBY (6:00 P.M.)	FREE	\$5.00	\$5.00

**ALL TICKETS CAN BE PURCHASED
BY MAILING PAYMENT WITH A STAMPED, SELF-
ADDRESSED ENVELOPE BEFORE JULY 18th, 2010 TO:
HURON COUNTY AGRICULTURAL SOCIETY
940 FAIR ROAD
NORWALK, OH 44857
419-668-0516**

**FAIR OFFICE WILL BE OPEN JULY 18th
OFFICE HOURS:**

**JULY 18 - AUGUST 12
MONDAY THRU FRIDAY 9 A.M. TO 5 P.M.**

**AUGUST 13 - AUGUST 14
9 A.M. TO 5 P.M.**

**AUGUST 15 - AUGUST 20
TO BE POSTED**

DAIRY SILENT AUCTION

**Monday - Saturday
East End of Jr. Fair Dairy Barn**



**Lee Germain
&
Judi**

*Comedy Illusionist for
Audiences of all ages*

APPEARING DAILY
Times to be announced



.....

•
•
•

**OSTPA SANCTIONED
HURON COUNTY TRACTOR PULL
WEDNESDAY - 6:30 PM**

OSTPA CLASSES

6,200#	SMFFWD
8,300#	SUPER STOCK
7,500#	MODIFIED
20,000#	SUPER SEMIS

HURON COUNTY AGRICULTURAL SOCIETY

2011 OFFICERS

Bob Morgan, North Fairfield, Oh.....President
 Dick Wiles, Willard, Oh.....Vice President
 Randolph Bacon, Greenwich, Oh.....Secretary
 Joan Deeble, North Fairfield, Oh.....Treasurer
 Pat Coy, North Fairfield, Oh.....Manager

DIRECTORS (TERM EXPIRES 2011)

Ron Lortcher.....Bronson Twp.
 Denny Miller.....Clarksfield Twp.
 BJ Kimberlin.....Greenwich Twp.
 Tom Moehle.....Norwalk Twp.
 Ben Ryerson.....Ripley Twp.
 Randy Miller.....Townsend Twp.
 Pat Coy.....Director-At-Large #5
 Rodd Tusing.....Director-At-Large #6
 Randy Eschen.....Director-At-Large #7
 Randolph Bacon.....Director-At-Large #8

DIRECTORS (TERM EXPIRES 2012)

Dave Cornish.....Farfield Twp.
 Steve Zimmerman.....Hartland Twp.
 Jeff Minich.....New Haven Twp.
 Brock Nuhfer.....Richmond Twp.
 Marvin Bumb.....Sherman Twp.
 Doug King.....Wakeman Twp.
 Steve Eden.....Director-At-Large #9
 Evan Clemons.....Director-At-Large #10
 Chad Welter.....Director-At-Large #11
 Marty Sowers.....Director-At-Large #12

DIRECTORS (TERM EXPIRES 2013)

Mike Brown.....Fitchville Twp.
 Matt Brooks.....Greenfield Twp.
 Molly Porter.....Lyme Twp.
 Randy Fishbaugh.....New London Twp.
 Richard Wiles.....Norwich Twp.
 Bob Wilhelm.....Peru Twp.
 Adam Myers.....Ridgefield Twp.
 Bob Morgan.....Director-At-Large #1
 Don Brown.....Director-At-Large #2
 Dean Chandler.....Director-At-Large #3
 Rich Marett.....Director-At-Large #4

HONORARY MEMBERS

Don Knight.....Bronson Twp., Oh
 Marilyn Flint.....Greenwich Twp., Oh
 George Sherman.....Lyme Twp., Oh
 Joe Gravenhorst.....Monroeville, Oh
 Carlos Tucker.....Norwalk, Oh
 Barbara Wurzel.....Norwalk, Oh
 Thomas Stieber.....Ridgefield Twp.
 Bernadine Stein-Stout.....Willard, Oh
 Tom Nuhfer.....Willard, Oh
 Mike Adelman.....Monroeville, Oh
 Richard Sutherland.....New London, Oh
 Terry Boose.....Norwalk, Oh
 Larry McGlinchy.....Norwalk, Oh
 Don Moyer.....Norwalk, Oh
 Lee Buckingham.....New Haven Twp, Oh
 Kenny Tkach.....Wakeman, Oh
 Deb Angell.....Norwalk, Oh

EX-OFFICIO MEMBERS

Bonnie Malone.....Norwalk, Oh
 Mike Gastier.....Norwalk, Oh

ATTENTION CAMPERS:

Camping sign-up begins when the office opens.

Last year's camping lots, in the South Lot, will be held until August 1st.

West Lot camping will be filled by the Senior Fair Board based upon availability.

On Aug. 2nd the remaining lots will open and be filled on a first come, first serve basis.

There will be no primitive camping.

Campers 31' in length and over will be assigned to the larger lots.

HURON COUNTY OFFICIALS

AUDITOR

Roland Tkach

CLERK OF COURTS

Susan Hazel

COMMISSIONERS

Joe Hintz
 Gary Bauer
 Larry Silcox

COMMON PLEAS JUDGE

James Conway

CORONER

Jeff Harwood, M.D.

ENGINEER

Joseph Kovach

PROBATE & JUVENILE JUDGE

Timothy Cardwell

PROSECUTOR

Russell Leffler

RECORDER

Karen Fries

SHERIFF

Dane Howard

TREASURER

Kathleen Schaffer

The Huron County Agricultural Society, along with individual board members and employees, assume no responsibility for any damage, theft, or injury to any persons or property on our Fairgrounds.

**HURON COUNTY
VETERAN'S COUNCIL**
Serving All Veterans

Remembering all those that served our country and never forgetting those that did not come back home. If you are a veteran and do not belong to a veteran's organization you are invited to do so. Those that did not serve and those still serving - We Welcome You! Ask at the Veteran's Pavilion what you can do to help.

VETERAN'S DAY - WEDNESDAY
The Huron County Tradition
Bean Soup - Come Join Us!
Serving at the Veteran's Pavilion
Beginning with Veteran's at 4 PM



Senior Citizen's Day

Thursday

**Sponsored by Willard Health Care Center
Activities at the Veterans Pavilion**



Senior Royalty Contest - 10:30 AM

Senior Bingo 1:30 - 3:30 PM

All Seniors Invited


Each Nursing Home in the county sends a king and queen contestant from their individual homes. A Sr. King and Sr. Queen will be picked from those participating. The contestants are judged on poise, personality and appearance. Entertainment is provided and a good time is in store for all who attend. The coordinator of the event is Stephanie Kluding from Twilight Gardens Nursing Home.

Nursing Home Foods Judging - Thursday - Home Arts Building

**2011 Huron County Fair
Committee Members**

Executive Comm. - Chairman, Bob Morgan, Pat Coy, Mike Brown, Steve Eden, Barney Bacon, Bob Wilhelm, Dick Wiles, Randy Eschen,
Sponsorships - Chairman, Pat Coy, Barney Bacon, Marty Sowers, Tom Moehle, **Rough Trucks** - Chairman, Steve Eden, Chad Welter, Adam Myers, Ben Ryerson, Rodd Tusing, Dean Chandler. **Motocross** - Chairman, Rodd Tusing, Steve Eden, Dean Chandler, Chad Welter, Adam Myers, Ben Ryerson. **Grandstand Seating** - Chairman, Bob Wilhelm, Ben Ryerson, Ron Lortcher, Steve Zimmerman, Dave Cornish, Jeff Minich. **OSTPA Tractor Pull** - Chairman, Randy Fishbaugh, Molly Porter, Denny Miller, Brock Nuhfer, Steve Eden, Chad Welter. **Superintendents** - Chairman, Marv Bumb, Bob Wilhelm, Bob Morgan, Doug King. **Public Relations** - Chairman, Dick Wiles, Steve Zimmerman, Barney Bacon, Marty Sowers. **Property & Grounds** - Chairman, Randy Eschen, Randy Miller, Brock Nuhfer, Mike Brown, Ron Lortcher, Rich Marett, Evan Clemons, Doug King, Tom Moehle, Randy

Fishbaugh, Rodd Tusing. **Landscaping** - Chairman, Randy Miller, Steve Zimmerman, Adam Myers, BJ Kimberlin, Dave Cornish. **Finance & Investment** - Chairman, Dick Wiles, Mike Brown, Bob Morgan, Bob Wilhelm. **Fair Book & Publicity** - Chairman, Steve Zimmerman, Pat Coy, Jeff Minich. **Tickets & Pricing** - Chairman, Barney Bacon, Mike Brown, Marv Bumb. **Demo Derby** - Chairman, Tom Moehle, Randy Miller, Denny Miller, Brock Nuhfer, Chad Welter, Adam Myers, Rich Marett. **Commercial Display** - Chairman, Pat Coy, Randy Eschen, Bob Wilhelm, Jeff Minich, Evan Clemons. **Camping & Parking** - Chairman, Dean Chandler, Randy Fishbaugh, Molly Porter, Ron Lortcher, Mike Brown, Matt Brooks, Don Brown,. **Audit Committee** - Chairman, Dick Wiles, Marv Bumb, Bob Morgan. **Cheer Bonanza** - Chairman, Molly Porter, Randy Fishbaugh. **Article 5 Assistants** - Chairman, Marv Bumb, Dick Wiles, Barney Bacon. **Expo Building** - Chairman, Pat Coy, Randy Eschen, Don Brown.



**Children's Day
Tuesday**

<p><i>Come See...</i> ..."TEDDY TROOPER" 11-1 Sponsored by The Ohio Troopers Coalition</p>	<p>Lots of fun activities at 1 PM!</p> <p>Kiddie Tractor Pull 12:00 Noon \$1 entry fee Ages 3-4, 5-6 & 7-8</p>	<p><i>Don't Miss...</i> ...BUSTER THE BUS 11-2 Sponsored by SBSAO School Bus Safety Organization</p>
---	--	---



**COME MILK
MAGGIE THE COW
NEAR BABY LAND!**

**JOIN US FOR LOTS OF OTHER FUN ACTIVITIES AT
BABY LAND, THE BABY FARM ANIMAL ZOO!**

ALL BROUGHT TO YOU BY: WESTERN RESERVE FFA

AGRICULTURAL HERITAGE OF HURON COUNTY, INC.

Preserving the past, educating the present, to enrich the future



Schedule of Events

BIG BARN OPEN
9:30 AM - 9:30 PM
DAILY

Crocheting
Painting
Quilting
Weaving
Spinning
Broom Making
Butter Making
Shaker Boxes
Flute Making
Needlework
Antique Tool Displays
Antique Furniture
Rope Making
Beekeeper

SENIOR'S DAY
Stew Cooked Over the
Wood Fire

BLACKSMITHING
Daily

HOUSE
Open Every Day
9:30 AM 'Til Dark

SQUARE DANCING
Friday Night
7:30 PM

KID'S DAY
Fun with Olde Time
Games & Activities

SAWMILL
Every Day
(Except Saturday)
Late Afternoon &
Evenings

**OLD FASHION
ICE CREAM**
Daily

COOKIES
Baked Daily

BARN DANCE
SATURDAY
6:00 PM

MASTER GARDENERS
Display of Herbal and Horticultural Materials
Garden Tips & Gift Ideas from the Garden
Information on the Master Gardeners Program

DAILY DEMONSTRATION - SEE SCHEDULE IN CRAFT BARN

Membership Required To Display
www.huroncountyagheritage.com

CAMPING REGULATIONS & RULES FOR THE HURON COUNTY FAIR

Priority for the West Lot Camping will be given as follows:

- 1st - Fairboard Directors
- 2nd - Food Concessionaires
- 3rd - Junior Fair Large Livestock Superintendants: defined as those species that are eligible to participate in the large livestock sale, one camper per species.
- 4th - Other Fair Personnel as designated by the Senior Fair Board

Priority for the South Lot Camping will be given as follows:

- 1st - Fairboard Directors
- 2nd - Concessionaires
- 3rd - Livestock Exhibitors
- 4th- General Public

All those camping in the West Lot or South Lot must have a membership or season ticket or 4-H Advisor Pass.

Camper applications available in the Secretary's Office.

All camper admission fees must be paid at the time of application including membership or season ticket.

A waiting list will be maintained to fill openings as they occur if necessary.

All garbage shall be stored in a suitable container and deposited daily in appropriate place.

Individual campers shall be responsible for policing their campsites.

All liquid waste from camper units shall be collected in an enclosed container such as a "tote tank", 5-15 gallons and disposed of in a slop drain by the Fairboard.

Toilet waste shall not be drained from any waste line or holding tank while on the fairgrounds, pumping will be available.

All electrical connections need to be grounded.

Alternative camper placement will be permitted with camping committee approval, approval MUST be obtained prior to parking your camper. SOUTH LOT SEE DEAN CHANDLER OR MATT BROOKS, WEST LOT SEE RANDY FISHBAUGH OR MOLLY PORTER.

Campers may be placed on lots the Thursday prior to fair week.

Campers must be removed by Tuesday evening following the last day of the fair.

Electric and water will be turned on Saturday morning before the fair.

All campsites must have an adult 21 yrs. of age.

Any infraction of rules and regulations of campers will be deemed reasonable grounds for immediate disbarment.

No subleasing.

No refrigerators or freezers allowed outside of campers in South Lot camping area.

After campers are parked they must remain in place for duration of Fair or space will be forfeited.

The Huron County Agricultural Society, along with individual board members and employees, assume no responsibility for any damage, theft, or injury to any persons or property on our Fairgrounds.



10th Annual
Huron County Fair
CHEERLEADING COMPETITION
"CHEER BONANZA"



TUESDAY, AUGUST 16
6:30 P.M.
In front of the Grandstand

Squads can compete in several divisions.

Registration Deadline July 31

Trophies and Cash Prizes will be awarded to the Top Scoring Teams

For More Details Contact Molly Porter
mporter2932@gmail.com
Phone (419) 651-1004 or (419) 483-0594

Huron County Fair
- MOTOCROSS RACES -

Thursday, August 18
7:00 P.M. at the Grandstand



Gates open at 5:00 P.M. Registration at the gate.
Practice at 6:00 P.M.
A mandatory riders meeting will follow after practice.

Quad and Bike classes available!
Please no utility ATV's.

ALL ATV'S MUST HAVE TETHER CORDS
YOU WILL NOT RACE IF YOU DON'T HAVE ONE.

We will use CRA class structure and rules with a few exceptions to be determined by the fair.
www.intra-action.com/cra



2010 Huron County Fair Small Livestock Champions



2010 Huron County Fair Large Livestock Champions

2011 Ohio Agricultural Fair Chronological Schedule

This chronological order is such, whereby the respective fairs are listed under the week they are either held or begin.

The Week of June 12			
Paulding County Fair (Paulding)	June 13-18		
Pickaway County Fair (Circleville)	June 18-25		
The Week of June 19			
Putnam County Fair (Ottawa)	June 20-25		
The Week of June 26			
Trumbull County Fair (Cortland)	June 29-July 4		
The Week of July 4			
Marion County Fair (Marion)	July 4-9		
Harrison County Fair (Cadiz)	July 5-9		
Clinton County Fair (Wilmington)	July 9-16		
Lawrence County Fair (Proctorville)	July 9-16		
Madison County Fair (London)	July 9-16		
The Week of July 10			
Logan County Fair (Bellefontaine)	July 11-17		
Jackson County Fair (Wellston)	July 15-23		
Franklin County Fair (Hilliard)	July 16-23		
The Week of July 17			
Adams County Fair (West Union)	July 17-23		
Crawford County Fair (Bucyrus)	July 17-23		
Perry County Fair (New Lexington)	July 18-23		
Warren County Fair (Lebanon)	July 18-23		
Carroll County Fair (Carrrollton)	July 18-24		
Fayette County Fair (Washington C.H.)	July 18-24		
Ottawa County Fair (Oak Harbor)	July 18-24		
Clark County Fair (Springfield)	July 22-29		
The Week of July 24			
Butler County Fair (Hamilton)	July 24-30		
Clermont County Fair (Owensville)	July 24-30		
Knox County Fair (Mt. Vernon)	July 24-30		
Shelby County Fair (Sidney)	July 24-30		
Union County Fair (Marysville)	July 24-30		
Seneca County Fair (Tiffin)	July 24-31		
Vinton County Fair (McArthur)	July 25-30		
Lucas County Fair (Maumee)	July 26-31		
Summit County Fair (Tallmadge)	July 26-31		
Ohio State Fair (Columbus)	July 27-Aug 7		
Pike County Fair (Piketon)	July 30-Aug 6		
Preble County Fair (Eaton)	July 30-Aug 6		
The Week of July 31			
Auglaize County Fair (Wapakoneta)	July 31-Aug 6		
Greene County Fair (Xenia)	July 31-Aug 6		
Gallia County Fair (Gallipolis)	Aug 1-6		
Columbiana County Fair (Lisbon)	Aug 1-7		
Medina County Fair (Medina)	Aug 1-7		
Wood County Fair (Bowling Green)	Aug 2-8		
Champaign County Fair (Urbana)	Aug 5-12		
Athens County Fair (Athens)	Aug 5-13		
Ross County Fair (Chillicothe)	Aug 6-13		
The Week of August 7			
Hartford Independent Fair (Licking Co.)	Aug 7-13		
Richland County Fair (Mansfield)	Aug 7-13		
Holmes County Fair (Millersburg)	Aug 8-13		
Scioto County Fair (Lucasville)	Aug 8-13		
Cuyahoga County Fair (Berea)	Aug 8-14		
Attica Independent Fair (Seneca Co.)	Aug 9-13		
Hamilton County Fair (Carthage)	Aug 9-13		
Ashtabula County Fair (Jefferson)	Aug 9-14		
Erie County Fair (Sandusky)	Aug 9-14		
Henry County Fair (Napoleon)	Aug 12-18		
Mercer County Fair (Celina)	Aug 12-18		
Miami County Fair (Troy)	Aug 12-18		
The Week of August 14			
Muskingum County Fair (Zanesville)	Aug 14-20		
Huron County Fair (Norwalk)	Aug 15-20		
Meigs County Fair (Pomeroy)	Aug 15-20		
Jefferson County Fair (Smithfield)	Aug 16-21		
Lake County Fair (Painsville)	Aug 16-21		
Allen County Fair (Lima)	Aug 19-27		
Darke County Fair (Greenville)	Aug 19-27		
Defiance County Fair (Hicksville)	Aug 20-27		
The Week of August 21			
Monroe County Fair (Woodsfield)	Aug 22-27		
Lorain County Fair (Wellington)	Aug 22-28		
Portage County Fair (Randolph)	Aug 23-28		
Sandusky County Fair (Fremont)	Aug 23-28		
The Week of August 28			
Noble County Fair (Caldwell)	Aug 29-Sept 3		
Morrow County Fair (Mt. Gilead)	Aug 29-Sept 5		
Stark County Fair (Canton)	Aug 30-Sept 5		
Hancock County Fair (Findlay)	Aug 31-Sept 5		
Mahoning County Fair (Canfield)	Aug 31-Sept 5		
Montgomery County Fair (Dayton)	Aug 31-Sept 5		
Richwood Independent Fair (Union Co.)	Aug 31-Sept 5		
Van Wert County Fair (Van Wert)	Aug 31-Sept 5		
Geauga County Fair (Burton)	Sept 1-5		
Fulton County Fair (Wauseon)	Sept 2-8		
Washington County Fair (Marietta)	Sept 3-6		
Highland County Fair (Hillsboro)	Sept 3-10		
The Week of September 4			
Morgan County Fair (McConnelsville)	Sept 6-10		
Belmont County Fair (St. Clairsville)	Sept 6-11		
Hardin County Fair (Kenton)	Sept 6-11		
Albany Independent Fair (Athens Co.)	Sept 7-11		
Wayne County Fair (Wooster)	Sept 10-15		
Williams County Fair (Montpelier)	Sept 10-17		
The Week of September 11			
Hocking County Fair (Logan)	Sept 12-17		
Guernsey County Fair (Old Washington)	Sept 12-18		
Wyandot County Fair (Upper Sandusky)	Sept 13-18		
Bellville Independent Fair (Richland Co)	Sept 14-17		
Delaware County Fair (Delaware)	Sept 17-24		
The Week of September 18			
Ashland County Fair (Ashland)	Sept 18-24		
Tuscarawas County Fair (Dover)	Sept 19-25		
Barlow Independent Fair (Washington Co.)	Sept 22-25		
The Week of September 25			
Brown County Fair (Georgetown)	Sept 26-Oct 1		
Coshocton County Fair (Coshocton)	Sept 30-Oct 6		
The Week of October 2			
Loudonville Independent Fair (Ashland Co.)	Oct 4-8		
The Week of October 9			
Fairfield County Fair (Lancaster)	Oct 9-15		

IMPORTANT NOTICE TO EXHIBITORS

The Huron County Agricultural Society reserves the option of prorating class premiums in the event that total receipts are insufficient to make payment in full possible, after payment of fixed expense. Board of Directors, Huron County Agricultural Society

Constitution of the Huron County Agricultural Society

Article 1 - Title

Section 1. The Society shall be known as the Huron County Agricultural Society.

Article 2 - Object

Section 1. The object of this Society shall be to promote and encourage agriculture, industry, science, art and other interests of Huron County which the Board deems proper and in the best interests of the Community.

Article 3 - Membership

Section 1. Any resident 18 years or over, of Huron County may become a member of this Society by paying annually the membership fee fixed by the Board of Directors. Section 2. No person shall pay or secure more than one such membership, and that membership shall be for himself. No membership shall be issued to corporations, organizations, partnerships or firms.

Article 4 - Board of Directors

Section 1. The membership shall consist of a Board of 31 Directors. One Director from each Township (19) and 12 Directors-at-Large: one-third of Directors-at-Large to be elected each year. Starting in 2001, 2002 and 2003, incorporated villages or cities will become Directors-at-Large in respective year that terms come up for election. An incorporated village or city will be considered as part of Township that it is located in. In 2002 election will be for Directors-at-Large #4 for a 2 year term, #5, #6, #7, and #8; in 2003 election will be for Directors-at-Large #9, #10, #11, and #12. In year 2004 Directors-at-Large will elect #1, #2, #3, and #4. Each Candidate must declare which Director-at-Large position they are seeking. Directors-at-Large may reside anywhere in Huron County, Ohio.

Section 2. Any vacancy caused by death, resignation, removal from office, or other causes may be filled by the Board. Huron County Agricultural Society Members from vacated area receive favored consideration; if no interest from vacated area, Board may appoint any Huron County Agricultural Society Member to fill vacancy until next annual election, when a qualified director shall be elected for unexpired term.

Section 3. If any member of the Board of Directors misses three consecutive regular meetings, the Board may declare his position vacant and name a successor to serve until the next annual election, when a director shall be elected for the unexpired term.

Section 4. Any Huron County Agricultural Society Member that has served a combined total of twenty (20) years as a Director will at retirement be considered an Honorary Member of the Huron County Agricultural Society. Honorary Members will be entitled to any and all privileges that the Board of Directors has in place, changes or enacts in the future.

Article 5 - Election

Section 1. The annual election of the Board of Directors shall be held at the secretary's office on Saturday of the Huron County Fair from 8:00 A.M. to 1:00 P.M.

Section 2. The said election shall be by ballot. Ballots must be marked with an "X" opposite the name of each candidate voted for; otherwise the name will not be counted.

Section 3. Only persons holding membership certificates at the time of election may vote.

Section 4. Members of the Society must declare their candidacy for the office of Director of the Society by filing with the Secretary of the Society, a petition signed by ten or more members of the Society who are residents of Huron County, at close of Office (5:00 P.M.), seven (7) days before the annual election of Directors is held. Only regularly nominated candidates who have met the filing requirements will be eligible for election as a Director.

Section 5. The term of office of the retiring Directors shall expire and that of the Directors-elect shall begin **on the day** of re-organization meeting of each year, or until their successors are elected and qualified.

Article 6 - Annual Meeting of the Membership

Section 1. The annual meeting of the members of the Society shall be held at a designated, published location, and date prior to the thirty-first (31st) day of December, during the calendar year of the fair.

Section 2. At this meeting, the Officers and Directors of the Society shall make reports to the membership of the Society concerning the past Fair and make recommendations for the betterment of future Fairs. The members shall be given the opportunity to make suggestions and recommendations for the improvement of the Society and the Fair. Such

other business may be presented as may be prescribed by this Constitution or as may be deemed proper by the Board of Directors.

Article 7 - Organization and Meetings

Section 1. The Board of Directors shall meet annually on the first Thursday of the second month following the fair and elect a President, Vice-President, Secretary and Treasurer. The office of Secretary and Treasurer may be held by the same person. The President, Vice-President and the Treasurer shall serve one year, and the Secretary not more than three years as the Board may determine, and until their successors are elected and qualified. Section 2. The President and Vice-President shall be Directors. The Secretary and Treasurer may or may not be Directors. Section 3. Before election of Officers, the newly elected Directors shall qualify by taking the following Oath (or affirmation) before a competent authority (designed by law): "I do solemnly swear (or affirm) that I will support the Constitution of the United States, the Constitution of Ohio, Laws of Ohio and rules and regulations of the Department of Agriculture of Ohio pertaining to agricultural societies and to the best of my ability perform the duties of Director of the Huron County Agricultural Society, so help me God."

Article 8 - Amendments

Section 1. Amendments to the Constitution or By-Laws may be proposed by:

A. A majority of the Board of Directors at a scheduled meeting voting in favor of placing an amendment on the ballot; or

B. Filing a petition with the Secretary of the Society at least 14 days prior to the annual election of the membership of the Society. Said petition must set forth the proposed amendment and be signed by not less than 25 members.

Section 2. If an amendment is proposed, it shall be submitted to the membership of the Society at the annual Election of the membership of the Society.

Section 3. When more than one amendment shall be submitted at the same time, they shall be submitted as to enable the members to vote on each amendment separately.

Section 4. If the majority of the membership voting on the proposed amendment shall adopt such amendment, it shall become part of the Constitution or By-Laws.

Article 9 - Compensation

Section 1. The President, Secretary, Treasurer, Fair Manager and Board members may be compensated in an amount as may be fixed by the Board of Directors.

Section 2. Each Officer, Member or Honorary Member of the Board of Directors and Superintendent of Departments who shall attend two or more meetings, regular or called, or who shall serve in their respective positions at the Fair, shall be entitled to one membership ticket in compensation for services rendered. The salaries of the Secretary and the Treasurer shall be set by the Board of Directors at each annual meeting. The necessary expenses of the President, Secretary and the Treasurer or Board members shall be paid to the annual meeting of the Fair Managers Assn., and expenses of the manager shall be paid for soliciting exhibits.

Article 10 - Bonds

Section 1. The Secretary and the Treasurer shall post a security bond in the amount as approved by the Board of Directors.

Article 11 - Fair Dates

Section 1. The Board of Directors shall fix the dates for the annual exposition of the Society, subject to the approval of the Ohio Director of Agriculture.

By-Laws

Article 1 - Quorum

Section 1. Ten members of the Board of Directors shall constitute a quorum for the body, and four shall constitute a quorum of the Executive Committee.

Article 2 - Meetings

Section 1. The regular meeting of the Board of Directors shall be the first Thursday of each month at 7:30 P.M. at the Huron County Fair Office. The Board of Directors will hold additional meetings on the third Thursday at 7:30 P.M. in the three (3) months prior to the Fair, the month after the Fair, and the day before the Fair opens.

Section 2. Special meetings may be held when necessary, at the call of the President or at the call of the Secretary upon the written request of any three members of the Board.

Section 3. Written notice of special meetings of the Board of Directors shall be sent to each Director by mail at least two days before the meeting. The notice need not specify the purpose of the meeting.

Article 3 - Order of Business

Section 1.

1. Roll Call.
2. Reading and approval or adoption of the minutes.
3. Bills and accounts.
4. Report of Committees.

- 5. Report of Officers.
- 6. Unfinished Business.
- 7. New Business.
- 8. Appointments.
- 9. Adjournment.

Section 2. The order of business may be temporarily suspended at any meeting upon a majority vote of a quorum present.

Article 4 - Duties of Officers

- 1. It shall be the duty of the President to preside at all meetings of the Board, to appoint committees, and to perform such other duties as are determined by the Board.
- 2. It shall be the duty of the Vice-President to assume all the duties of the President in the event of his absence or vacancy of office and to perform such other duties as are determined by the Board.
- 3. It shall be the duty of the Secretary to:
 - A. Keeps a list of all members of the Society.
 - B. Keeps accurately a record of all proceedings of the Society and the Board.
 - C. Notifies all members of the Board of the time and place of all special meetings.
 - D. Gives the members of the Society notice of the time and place of all annual elections of the Board of Directors and the annual meeting of the membership.
 - E. Be responsible for all correspondence as may pertain to Board business.
 - F. Work closely with all officers: President, Treasurer, Fair Managers and etc.
 - G. Perform such other duties as are determined by the Board.

Section 4. It shall be the duty of the Treasurer to:

- A. Receives all money and gives a receipt for same as to amounts and services from which it came.
- B. Code all receipts and expenditures and coordinate all accounting such as taxation, tickets, premiums, and other receipts and expenditures.
- C. Pay all bills and accounts as authorized by the Board. Includes premiums, horse racing and etc.
- D. Report all bills and accounts of their financial status to the regular Board meeting.
- E. Perform such other duties as are determined by the Board.

Section 5. It shall be the duty of the Fair Managers:

- A. Negotiate contracts as necessary such as concession, vendors and so forth.
- B. Supervise ground keepers.
- C. Coordinate all Fair functions and rentals such as off-season rentals and building rentals.
- D. Office manager and hires necessary help during the Fair.
- E. Will edit the Fair book for printing. Solicit advertisement and corrections will be handled by special Board committee to be turned over to Manager.
- F. Perform such other duties as are determined by the Board.

Article 5 - Standing Committees

The Standing Committees of the Society shall be appointed annually by the President of three or more members and shall be: Property Committee, Finance and Planning Committee, Auditing Committee, Speed Committee, Public Relations Committee, The Executive Committee to consist of seven members including the Officers, who shall represent the Board in case of emergency, when not in session. The president shall appoint each year two members of the Board whose duty it shall be to assist the Treasurer to select ticket men at the gate and grandstand and who shall assist in the supervision of same. The President shall appoint each year, three members of the Board whose duty it shall be to supervise the policing of the grounds.

Article 6 - Rules

The Board of Directors may enact such Rules and Regulations for conducting the business of the Society which do not conflict with the Constitution or By-Laws, Regulations of the Ohio Department of Agriculture, or Laws of the State of Ohio.

NO-

- | | |
|---------------|----------------|
| Dogs | Skate Boards |
| Alcohol | Laser Pointers |
| Bicycles | Exotic Animals |
| Roller Blades | |

Allowed on the Huron County Fairgrounds

OHIO EXHIBITION RULES

901:1-18-01 CHAPTER S APPLICATION.

(A) Animals listed in this chapter when moved or imported into Ohio for exhibition purposes only shall comply with the requirements of this chapter and when in compliance with the provisions of this chapter shall, with the exception of rules governing movement and importation of quarantined animals, be exempt from any other rules governing movement within or importation into Ohio.

(B) Animals moved within or imported into Ohio for any purpose in addition to exhibition shall meet all movement and import requirements of Chapter 901:1-17 of the Administrative Code.

901:1-18-02 DEFINITIONS.

As used in this Chapter:

(A) "Exhibition" means any public show of animals which is sponsored by or under the control of an Ohio County or independent Agricultural Society organized under Chapter 1711. of the Revised Code; or the Ohio State Fair; or which is assembled for a period which exceeds thirty-six hours or contains animals of origins other than Ohio.

(B) "Certificate of Veterinary Inspection" means a form from the state of origin which has been issued and completed by a licensed and accredited veterinarian attesting to the health status and identification of an animal listed thereon.

(C) "Approved Veterinarian" means any licensed and accredited veterinarian approved by the Ohio Department of Agriculture, or an employee of the Ohio Department of Agriculture, or the United States Department of Agriculture, Animal Plant Health Inspection Service, Veterinary Services.

(D) "Licensed and accredited Veterinarian" means a person who is licensed by the State of Ohio to practice veterinary medicine and who is certified by the United States Department of Agriculture, Animal Health Inspection service, Veterinary services, to be an accredited Veterinarian.

(E) "Residue" means any poisonous or deleterious pesticide governed by 40 C.F.R. 180, any poisonous or deleterious substance governed by 21 C.F.R. 109.6, or any other substance governed by 21 C.F.R. 556.

(F) "Contagious or infectious disease" means any disease, including any foreign animal disease, or vector, capable of transmission by any means from a carrier animal to a human or to another animal and includes dangerously contagious or infectious diseases.

(G) "Tuberculosis accredited free herd" is one that has passed at least two consecutive annual negative official tests for tuberculosis in accordance with the "Uniform Methods and Rules Bovine Tuberculosis Eradication", and has no other evidence of bovine tuberculosis.

901:1-18-03 EXHIBITIONS: SANITATION, INSPECTION AND RECORDS.

(A) Each entity sponsoring an exhibition shall have in attendance an Approved Veterinarian for the duration of the exhibit.

(B) Each entity sponsoring an exhibition shall:

(1) Immediately, prior to an exhibition and under the direction of the Approved Veterinarian, thoroughly clean and disinfect each building, pen, stall, ring or other enclosure in which animals are to be quartered for exhibition;

(2) Have the Approved Veterinarian:

(a) Examine the Certificate of Veterinary Inspection when required for an animal brought to the exhibition;

(b) Inspect within a reasonable time of arrival each animal brought to the exhibit for symptoms of any infectious or contagious diseases;

(c) Daily inspect each animal present at the exhibition for symptoms of any infectious or contagious disease.

(3) Maintain a record for one year from the date of the exhibition of each animal present at the exhibit. The record shall contain the name and address of the owner of each animal and the species and breed of the animal.

(4) May order the immediate removal of any animal which in the opinion of the Approved Veterinarian places other animals at unacceptable risk of disease.

(C) An exemption from the requirements of Paragraph (B)(1) of this rule may be requested from the Department and will be granted when, in the judgment of the Department, cleaning and disinfection will serve no purpose. By way of example only, cleaning and disinfection will generally serve no purpose in a newly constructed building that has never been occupied.

901:18-04 EXHIBITORS

(A) No person shall present for exhibition or exhibit an animal which he knows or has reason to suspect is affected with or has been exposed to a dangerously contagious or infectious disease or

(B) The owner or bailee of an animal with symptoms of an infectious or contagious disease shall, when directed by an Exhibition Official, the Approved Veterinarian, or an employee of the Ohio Department of Agriculture, immediately remove the animal from the exhibition premises.

(C) Upon request, each person who presents for exhibition or exhibits an animal, shall make available any Certificate of Veterinary Inspection, Registration Certificates, Vaccination Certificate, and other documents to exhibition officials, the Approved Veterinarian or an Employee of the Ohio Department of Agriculture.

(D) Each person who presents for exhibition or exhibits an animal for which a Certificate of Veterinary Inspection is required by Rules 901:1-18-01 to 901:18-11 of the Administrative Code shall forward a copy of the Certificate of Veterinary Inspection to the Ohio Department of Agriculture's Division of Animal Industry.

901:1-18-05 POULTRY AND FOWL

(A) All turkeys, chickens and game birds moved within or imported into Ohio for exhibition must:

(1) Originate directly from a flock or hatchery which is a participant in the National Poultry Improvement Plan for the eradication of disease and be accompanied by documentary evidence that they meet the requirements of this Paragraph; or

(2) Originate directly from a flock which has had a negative test for Pullorum/Fowl Typhoid Disease within twelve months preceding the Opening Date of Exhibition and be accompanied by Documentary Evidence that they meet the requirement of this paragraph; or

(3) Have had a negative test for Pullorum/Fowl Typhoid Disease, within ninety days, preceding the Opening Date of the exhibition and be accompanied by Documentary Evidence that they meet the requirement of this Paragraph; or

(4) Be tested for Pullorum/Fowl Typhoid Disease upon arrival at the Exhibition by a Tester approved by the Ohio Department of Agriculture and found negative.

(B) The Rapid Whole Blood Test shall not be used to test turkeys for compliance with the requirement of Paragraphs (A)(2), (A)(3), AND (A)(4) of this rule.

SPECIAL REQUIREMENT FOR HURON COUNTY FAIR ENTRANTS

A copy of the flock's Pullorum Papers or Hatchery Papers must accompany all entries.

(C) Waterfowl, doves and pigeons are exempt from this rule.

901:1-18-06 CATTLE

(A) Cattle moved within Ohio for exhibition:

(1) The animals presented for exhibition must show no symptoms or evidence of an infectious or contagious disease.

(B) All cattle imported into Ohio for exhibition must:

(1) Be accompanied by a Certificate of Veterinary Inspection issued within thirty days preceding the Opening Date of Exhibition;

(2) A new import requirement will be added in this paragraph upon the effective date (May 2001) of this rule. Please contact the exhibit sponsor for the updated version of this rule.

(3) If from a Brucellosis Class A State or Area must be negative to an Official Brucellosis Test within thirty days of the Opening Date of the Exhibition unless: They are under six months of age, steers, or Official Vaccinated under twenty months of age (Dairy) or twenty-four months of age (Beef); and

(4) If from a Brucellosis Class B or C State or Area must meet all requirements from Pre-Entry Testing as specified in 9 C.F.R. 78.9 and obtain an Ohio Permit prior to movement.

(C) Cattle from a Brucellosis certified free herd or class free state are not required to be Brucellosis tested.

901:1-18-07 GOATS

In order for Ohio to maintain Consistent State Status, Ohio sheep and goat exhibitions will be considered Interstate Commerce.

(A) Goats moved within Ohio for exhibition:

The animal presented for exhibition must show no symptoms or evidence of an infectious or contagious disease.

(B) Requirements for bringing sheep and goats into Ohio for exhibition, sale or breeding:

(1) Certificate of Veterinary Inspection (CVI) issued within thirty days of the opening date of the exhibition; and

(2) CVI must be signed by the owner and the veterinarian attesting to the following statement: "The sheep/goats in this shipment are not known to be under any movement restrictions because of scrapie."; and

(3) Show no symptoms or evidence of an infectious or contagious disease; and

(4) All sheep and goats must be identified with official USDA identification (USDA approved sheep tags, USDA approved tattoos, or identification in the Scrapie Flock Certification Program); and

(5) If the animal was born after January 1, 2002, it must have official USDA sheep/goat identification and be identified to the flock of birth.

(C) Identification requirements for sexually intact sheep and goats moving within Ohio for exhibition including sales:

(1) Official USDA sheep/goat identification in the form of an approved tag or tattoo.

(2) If the animal was born after January 1, 2002, it must have official USDA sheep/goat identification and be identified to the flock of birth either by an eartag or tattoo placed by the owner of the flock of birth, or a tag or tattoo placed by the purchaser.

(3) The identification requirements for flocks enrolled in the Voluntary Scrapie Flock Certification Program qualify as official USDA identification for exhibition and interstate movement; no other special identification is needed.

Ohio sheep and goat wethers that are less than 18 months of age exhibited in Ohio do not require USDA identification.

901:1-18-08 HORSES, MULES AND PONIES

(A) Horses, mules and ponies moved within Ohio for exhibition:

(1) If not under quarantine and if they are free of any signs of a contagious or infectious disease; and

(2) If the animal is twelve months of age or older, the Exhibition Manager may require that the animal has been tested and classed negative to an Official Test for Equine Infectious Anemia within twelve months of the Closing Date of the Exhibition.

(B) Horses, mules and ponies imported into Ohio for exhibition:

(1) Shall be accompanied by an Official Certificate of Veterinary Inspection issued within thirty days of the Opening Date of Exhibition or obtain a permit for extended time granted by the Chief of the Division of Animal Industry as authorized in paragraph (C) of rule 901:1-17-01 of the Administrative Code; and

(2) If the animal is twelve months of age or older, it shall be accompanied by evidence the animal was negative to an Official Test for Equine Infectious Anemia within six months of the Opening Date of the Exhibition; and

(3) Upon request by an Authorized Representative of the Ohio Department of Agriculture, the person responsible for each animal must make available a chronological list of dates, places and events attended by this animal within thirty days prior to entry into Ohio.

SPECIAL REQUIREMENT FOR HURON COUNTY FAIR ENTRANTS

All Horses, Mules, and Ponies must receive a Flu-Rhino Vaccination three to twelve weeks prior to the Fair. A copy of vaccination is to accompany entry.

901:1-18-09 SHEEP

In order for Ohio to maintain Consistent State Status, Ohio sheep and goat exhibitions will be considered Interstate Commerce.

(A) Sheep moved within Ohio for exhibition:

The animal presented for exhibition must show no symptoms or evidence of an infectious or contagious disease.

(B) Requirements for bringing sheep and goats into Ohio for exhibition, sale or breeding:

(1) Certificate of Veterinary Inspection (CVI) issued within thirty days of the opening date of the exhibition; and

(2) CVI must be signed by the owner and the veterinarian attesting to the following statement: "The sheep/goats in this shipment are not known to be under any movement restrictions because of scrapie."; and

(3) Show no symptoms or evidence of an infectious or contagious disease; and

(4) All sheep and goats must be identified with official USDA identification (USDA approved sheep tags, USDA approved tattoos, or identification in the Scrapie Flock Certification Program); and

(5) If the animal was born after January 1, 2002, it must have official USDA sheep/goat identification and be identified to the flock of birth.

(C) Identification requirements for sexually intact sheep and goats moving within Ohio for exhibition including sales:

(1) Official USDA sheep/goat identification in the form of an approved tag or tattoo.

(2) If the animal was born after January 1, 2002, it must have official USDA sheep/goat identification and be identified to the flock of birth either by an eartag or tattoo placed by the owner of the flock of birth, or a tag or tattoo placed by the purchaser.

(3) The identification requirements for flocks enrolled in the Voluntary Scrapie Flock Certification Program qualify as official USDA identification for exhibition and interstate movement; no other special identification is needed.

Ohio sheep and goat wethers that are less than 18 months of age exhibited in Ohio do not require USDA identification.

901:18-10 SWINE

(A) Swine moved within Ohio for exhibition:

(1) At a terminal show must:

(a) Show no symptoms or evidence of an infectious or contagious disease; and

(b) Originate from a county which sixty days prior to the Exhibition Opening Date had no pseudorabies quarantined herds; and

(c) Have no breeding swine present and all swine removed are delivered for immediate slaughter or to a licensed livestock facility.

(d) Notwithstanding any other provisions of these rules, the manager or sponsor of the exhibition may, prior to permitting the exhibition of any porcine animal at a terminal show require proof, for example a VS form 4-33, animal disease diagnostic laboratory submission form, or a Certificate of Veterinary Inspection, the animal has been tested and classed "negative" to an official test for pseudorabies within forty-five days immediately preceding the Opening Date of the exhibition.

(2) At all other shows, must be accompanied by a Certificate of Veterinary Inspection issued within forty-five days preceding the Exhibition opening Date; and Must be negative to an official pseudorabies test within forty-five days of the Exhibition Opening Date unless:

(a) They originate immediately and directly from a Pseudorabies Qualified Herd; or

(b) Are suckling pigs accompanying a negative dam; or

(c) They originate from a pseudorabies vaccinated herd and meet the following conditions:

(i) The herd has had a negative monitored test within twelve months; and

(ii) The swine presented for show are negative to a pseudorabies differential test; or

(3) Will be exempt from the requirement of a Certificate of Veterinary Inspection if they originate immediately and directly from a stage V area and show no symptoms or evidence of an infectious or contagious disease.

(4) Are exempted by a written permit issued by the Department.

(B) Swine imported into Ohio for exhibition:

(1) Must be accompanied by a Certificate of Veterinary Inspection issued within thirty days preceding the Exhibition Opening Date; and

(2) Be negative to an Official Pseudorabies Test within thirty days of the Exhibition Opening Date unless:

(a) They originate immediately and directly from a stage V area or from an area or country recognized by United States Department of Agriculture, Animal Plant Health Inspection Service, veterinary services as pseudorabies free; or

(b) They originate immediately and directly from a pseudorabies qualified herd and have not been previously exhibited this show season; or

(c) Are exempted by a written permit issued by the Department.

(C) Swine moved within or imported into Ohio for racing shall:

(1) Be separated at all times from any other swine on the Exhibition Grounds by the greatest distance reasonably possible; and

(2) Be accompanied by a Certificate of Veterinary Inspection issued within thirty days preceding the Opening Date of the Exhibition; and

(3) Be negative to an Official Pseudorabies Test within thirty days of the Exhibition Date unless:

(a) They originate immediately and directly from a stage V area or from an area or country recognized by United States Department of Agriculture, Animal Plant Health Inspection Service, veterinary services as pseudorabies free; or

(b) They originate immediately and directly from a Pseudorabies Qualified Herd and have not been previously exhibited this show season;

(c) Are exempt by written permit issued by the Department.

(4) Be exempt from the immediate slaughter requirement of Paragraph (A)(c) of this rule.

901:1-18-11 LLAMA

(A) Llama moved within Ohio for exhibition when presented for exhibition must show no evidence of an infectious or contagious disease.

(B) Llama imported into Ohio for exhibition:

(1) Must be accompanied by a Certificate of Veterinary Inspection issued within thirty days preceding the Exhibition Opening Date.

(2) When presented for exhibition must show no evidence of contagious disease.

901:19-01 OHIO S LIVESTOCK TAMPERING EXHIBITION RULES

Chapter 901-19 of the Administrative Code (Ohio s Livestock Tampering Exhibition Rules) will be made available to a livestock exhibitor or an adult supervisor upon request.

Rules Governing Entries, Exhibits and Awards

GENERAL

1. The Huron County Agricultural Society reserves the right to rule on all questions not covered by these rules.

2. Disregard of any rule by exhibitor or concessionaire forfeits all premiums, rights and privileges without recourse.

3. The management will use diligence to insure the safety of livestock and articles entered for exhibition or display after their arrival on the grounds, but under no circumstances will it be responsible for loss, injury or damage by fire, lightning, wind or any other agency, to such livestock, articles on exhibition or display, and the Fair Management thereof shall be released by the exhibitor from all legal or other proceedings relating thereto.

4. Exhibitors must place all exhibits under the direction of the superintendent in charge.

5. Promiscuous advertising is strictly prohibited. Exhibitors may advertise and distribute from their places of exhibition only. **The distribution of advertising matter that conflicts in any manner with a concession sold by the management is prohibited.**

ENTRIES

July 19th the Secretary's Office will be open Monday through Friday from 9 A.M. to 5 P.M. Entries close July 31st. All open class exhibitors must pay any designated entry fee and have membership or season ticket as follows: Huron County residents must have membership ticket. Out-of-county residents must have season ticket. All livestock papers must be checked by the official veterinarian. No reservations for stalls unless paid for.

1. Application for entries in all departments must be made on the printed forms provided by the Secretary for that purpose and must be in full compliance with the printed instructions on the same. The right is reserved to reject any entry offered.

2. All entries must be made in the name of the bona fide owner. In order that a permanent record be on file it is essential that the name and record number or ear tag number be given of all animals entered. Entries will not be accepted unless this information is furnished at the time of making entry. All animals regardless of age, except in certain sections of the Horse Departments, must be recorded and appear on the records of their association.

3. Entry / Stall fees will be charged in Departments as listed in Fair Book. Exhibitors must also purchase a membership / season ticket as described above. This rule applies in all departments except exhibitors in Junior Fair.

4. Incomplete entries will be returned for correction. Exhibitors are urged to enter early and use great care in filling out entry blanks. This will save work and annoyance for exhibitor and Secretary.

5. Collections and displays must be made up of specimens other than those entered in single classes, except in Department 11.

6. Exhibitors will find their entry tags at the Secretary's Office on the grounds, Monday, Opening Day unless already picked up.

7. All exhibits must be in place at 8 A.M. Monday, unless otherwise stated.

8. Exhibitors should be particular in giving all the information requested on the entry blank in clear terms easily understood.

9. Misrepresentation as to the breeding and irregularity in showing will be exposed and any premium won by such exhibitor will be withheld.

10. The Society reserves the right to pay the premiums which may be awarded for the exhibition pro rate, provided there are not sufficient funds (after paying all expenses of the Society) in the treasury to pay in full.

11. The amount and number of premiums awarded to any exhibit, which in the opinion of the Judge and Superintendent of the department, is found below standard and unworthy of merit, shall be determined by the Judge and Superintendent of that department.

12. Premiums will be mailed. All premiums not cashed by November will be forfeited to the Society. This rule will be enforced to the letter, as the Treasurer is required by law to file an annual statement of the receipts and expenditures of the Society to the County Auditor on November 30th.

ALL CHECKS NOT CASHED IN 60 DAYS WILL BE FORFEITED TO THE H.C.A.S.

FEES

1. All applications for stalls and pens and fees must be noted on the entry blanks at the time of filing. Exhibitors must indicate on the entry form the number of animals or birds they will show.

2. Reservations will not be made unless accompanied by the required fee. Assignment will be made by the superintendent in charge.

NO BEDDING FURNISHED - ONLY STRAW, SAWDUST OR WOODCHIPS CAN BE USED.

RELEASE

Open Class Livestock exhibits will be released at 8:00 A.M. on Sunday. Release deadline 2:00 P.M.

PROTEST

Protests must be made in writing and filed with the Secretary by noon on the day following award, accompanied by protest fees of \$20.00, which will be retained if protest is not sustained.

- NOTE -

ALL PENS MUST BE CLEANED BEFORE LEAVING

BOYS AND GIRLS CLUB WORK AND VOCATIONAL AGRICULTURAL WORK

All club work and Vocational Agriculture Projects shown in the Open Class will be charged the regular open class fees including stall rent but do not have to purchase membership ticket.

CONCESSIONS AND PRIVILEGES

1. Concessionaires are bound by the terms of the contract they sign at the time of securing concessions. In addition they are liable to strict supervision by the management.
2. The abuse of any privilege granted, by extortion, impure or unwholesome foods, sale of dishonest goods, untidy appearance of booths, or other acts or practices objectionable to the management will forfeit all rights and privileges without recourse.
3. All shows must be clean, of high standard and catering to ladies, gentlemen and children, free from immoral tendencies and officials of the Huron County Agricultural Society are to be sole judges of the above qualifications and conditions.
4. All concessions must be run as a game of skill and science and no games of chance or gambling will be in any way permitted.

**ELECTIONS OF DIRECTORS SATURDAY
8:00 A.M. - 1:00 P.M.**

**Department No. 1
HORSES**

Judging Thursday 9:00 a.m.
G.A. Pickworth Judging Pavilion
Entry fee \$2.50 per stall
Entries close July 31st

MARVIN BUMB, SUPERINTENDENT
6465 Bismark Rd., Bellevue, Ohio 44811
Phone (419) 483-4569

All Horses, Mules, and Ponies must receive a Flu-Rhino Vaccination three to 12 weeks prior to the Fair. A copy of the vaccination must accompany entry.

No bedding furnished. Only straw, sawdust or woodchips can be used. Competition open to world except counties excluding Huron County.

All entries of Pure Bred Percherons and Belgians must be registered in exhibitor's name.

Exhibitors must specify on entry blanks the number of animals entered and the number of stalls wanted.

The age of horses and foals shall be reckoned from January 1st.

All Pure Breds, over one year of age shall be recorded in their respective associations.

All entries shall be in place not later than 8:00 A.M. Monday.

All exhibits released at 8:00 A.M. Sunday.

All stalls must be clean before leaving.

Twelve dollar tie in per animal.

CLASS A - PERCHERONS CLASS

PUREBREDS

B - BELGIANS

1. Stallion, 3 yrs. old and over.....20 15
2. Stallion, 2 yrs. old and under 3.....20 15
3. Stallion, 1 yr. old and under 220 10 5
4. Stallion Foal20 10 5
5. Mare, 5 yrs. old and over.....20 15 10 5
6. Mare, 4 yrs. old and under 5.....20 15 10 5
7. Mare, 3 yrs. old and under 420 15 10 5
8. Mare, 2 yrs. old and under 320 10 5
9. Mare, 1 yr. old and under 220 10 5
10. Mare Foal20 10 5
11. Mare and colt15 10 5
12. Two colts, either sex,

- Produce of same mare.....15 10 5
13. Stallion and 3 mares, any age, owned by exhibitor.....15 10 5
14. Three mares, any age, owned by exhibitor.....15 10 5
15. Best matched team, in halter.....20 15 10 5
16. Champion Stallion.....Rosette
17. Champion Mare.....Rosette
18. Reserve Champion Stallion.....Rosette
19. Reserve Champion Mare.....Rosette

CLASS C - HEAVY GRADE DRAFT

1. Mare or Gelding, any age20 16 14 12 10

CLASS D - SHOWMANSHIP - No entry required

1. Pee-Wee 8 years and under.....Trophy
2. Ages 12 years and Under.....Trophy
3. Ages 13 15 yearsTrophy
4. Ages 16 18 yearsTrophy
5. Best Decorated Stall\$15.00

CLASS E - HITCH CLASS - Driver and assistant must wear hat, coat, tie, dress pants and/or dress. (To be shown in Weisenberger Arena, alternating with Ponies at approximately 1:00 PM)

1. Junior Cart ClassNo Premium
2. Men Cart Class20 17 14 12 10
3. Women Cart Class20 17 14 12 10
4. Junior TeamNo Premium
5. Team Class35 20 15 10 5
6. Unicorn Class40 25 15 10 5
7. Four Horse Hitch60 40 25 15 10
8. Farm Hitch25 20 15 10 5
9. Draft Under Saddle No Premium

**Department No. 2
PONIES**

Judging
Monday 10:00 a.m.
Classes A-F, G 9-11
Thursday 10:30 a.m.
Classes G 1-8, H
Weisenberger Arena

Entry fee \$2.50 per stall
Entries close July 31st

SHARON BROWN, SUPERINTENDENT
641 Exchange Road, New London, OH 44851
Phone (419) 929-2261

Earl Erswell, Asst. Superintendent
Phone (419) 929-8606

Dan Brown, Asst. Superintendent
Phone (419) 929-2261

All Horses, Mules, and Ponies must receive a Flu-Rhino Vaccination three to 12 weeks prior to the Fair. A copy of the vaccination must accompany entry.

ACCESS TO JUDGES AT THE FAIR: No one may talk to the judge or enter the ring during a show. AFTER the show, requests to speak to the judge must go through the superintendent. IF the judge agrees to take questions, the exhibitor must be present and ask the questions.

No bedding furnished. Only straw, sawdust or woodchips can be used. All animals entered must be in the name of the bona fide owners or their duly authorized agents.

Exhibitors ages as of January 1.

All Ponies must participate in a **HALTER or DRIVING CLASS.**

All attendants must be neatly and properly dressed upon entering show ring. Superintendents have the right to enforce the rules.

Classes open to the world except residents of counties where classes are closed to Huron County owners.

A pony may be any breed or combination of breeds.

All ponies must be entered individually. NO CLIPPING or TRIMMING in AISLE WAY.

Ponies to be in place by 1:00 P.M. Sunday.

All ponies entered in the Pony Show will be measured Sunday at 2:15 P.M. Show numbers must be picked up at this time.

Positively no ponies to be ridden on fairgrounds.
 Positively No Non-Gelded Males in Pony Department Barns or Shows.
 Ponies and horses stabled in the Pony Dept. & Open Class Horse Dept.
 will have use of Weisenberger Arena and Verizon Arena at posted times.
 Each exhibitor must purchase a membership or season ticket.
Ponies shown in Class C not eligible to show in Classes D or E.
Ponies shown in Class D not eligible to show in Classes C, E or F.
Ponies shown in Class E not eligible to show in Classes C or D.

CLASS A - DONKEYS & MULES - HALTER

- 1. Jenny, any age15 10 8 5
- 2. Johns, any age15 10 8 5
- 3. Showmanship (exhibitor any age)15 10 8 5

CLASS B - MARES & FOALS

- 1. All Mares & Foals of Any Breed
 Born in Current Year20 15 10 6

CLASS C - MINI HALTER - 38" AND UNDER

- 1. Mare, any age15 10 8 5
- 2. Gelding, any age.....15 10 8 5

Champion Mini Halter open to first 2 winners of each entry.
 Grand Champion Mini Halter - Rosette
 Reserve Champion Mini Halter - Rosette

- 3. Solid Color.....Ribbons Only
- 4. Multi Color.....Ribbons Only

CLASS D - DRAFT PONIES UP TO 60" & REGISTERED HALFLINGERS

- 1. Mares, any age15 10 8 5
- 2. Gelding, any age.....15 10 8 5
- 3. Draft Showmanship (exhibitor any age).....15 10 8 5

Champion Draft Type Pony open to first 2 winners of each entry
 Grand Champion Draft Type Pony - Rosette
 Reserve Champion Draft Type Pony - Rosette

- 4. Matched Pair15 10 8 5

CLASS E - PLEASURE TYPE PONIES 56" AND UNDER

- 1. Mare, any age, under 48"15 10 8 5
- 2. Mare, any age, 48" to 58"15 10 8 5
- 3. Gelding, any age, under 48"15 10 8 5
- 4. Gelding, any age, 48" to 58"15 10 8 5

Championship Pleasure Ponies open to first 2 winners of each entry.
 Grand Champion Pleasure Pony - Rosette
 Reserve Champion Pleasure Pony - Rosette

CLASS F - HALTER PLEASURE TYPE 56" AND UNDER

- 1. Showmanship (ages 4 and under)10 8 5 3
- 2. Showmanship (ages 5 and 6)10 8 5 3
- 3. Showmanship (ages 7 and 8)10 8 5 3
- 4. Showmanship (ages 9 and over).....10 8 5 3

**CLASS G - PERFORMANCE
 No Exhibitor Crossover from 1 & 2**

- 1. Lead In Class (8 and under)15 10 8 5
- 2. Walk and Trot (8 and under)15 10 8 5
- 3. Pony Under Saddle (48" and under).....15 10 8 5
- 4. Pony Under Saddle 48" and over).....15 10 8 5
- 5. Down & Back(8 and under).....15 10 8 5
- 6. Tot Barrels (8 and under).....15 10 8 5
- 7. Barrel (9 and over).....15 10 8 5
- 8. Obstacle Course (8 and under).....15 10 8 5
- 9. Costume Class (10 and over).....15 10 8 5
- 10. Costume Class (7 to 9 years old)15 10 8 5
- 11. Costume Class (6 and under).....15 10 8 5

CLASS H - PONY HITCH CLASS 60" AND UNDER

- 1. Single Pleasure Hitch.....15 10 8 5
 (48" and under **(No Mini's)**)
- 2. Mini Driving (38" and under).....15 10 8 5
- 3. Single Pleasure Hitch (48" and over).....15 10 8 5
- 4. Men Cart **(No Mini's)**.....15 10 8 5
- 5. Men Cart **(Mini's)**.....15 10 8 5
- 6. Women Cart **(No Mini's)**.....15 10 8 5
- 7. Women Cart **(Mini's)**.....15 10 8 5
- 8. Surprise Obstacle Course Driving (48" and under).....15 10 8 5
- 9. Surprise Obstacle Course Driving (48" and over).....15 10 8 5
- 10. Single Draft Hitch.....15 10 8 5
- 11. Men's Cart Draft Type15 10 8 5
- 12. Women's Cart Draft Type.....15 10 8 5
- 13. Draft Team Hitch.....20 15 10 8

**Department No. 3
 BEEF CATTLE**

**Judging Wednesday
 9:00 AM
 Pickworth Judging Pavilion**

**Entry Fee \$2.50 per Head
 Entries close July 31st**

**CHAD LORTCHER, SUPERINTENDENT
 1335 Hanville Corners Road, Willard, Ohio, 44890
 Phone (419) 744-2446**

**Ron Lortcher, Asst. Superintendent
 Phone (419) 663-1531**

All exhibitors will be required to present a certificate of registry or proof of eligibility to register for all cattle.

Each exhibitor restricted to two entries in single classes and one in groups.

No bedding furnished. Only straw, sawdust or woodchips can be used. Any artificial means of removing or remedying the physical defects or confirmation in exhibition cattle will be considered fraud and deception.

All exhibits released at 8:00 A.M. Sunday.

- CLASS A - LIMOUSIN**
- CLASS B - HEREFORD**
- CLASS C - ABERDEEN ANGUS**
- CLASS D - CHIANINA**
- CLASS E - SIMMENTAL**
- CLASS F - BEEF CROSS**
- CLASS G - SHORTHORN**
- CLASS H - MAINE ANJOU**
- CLASS I - LONGHORN**

- 1. Bull, 2 yrs. old or over25 20 15 10
- 2. Senior Yearling Bull25 20 15 10
 (Sept. 1 to Dec. 31, 2009)
- 3. Junior Yearling Bull25 20 15 10
 (Jan. 1 to Apr. 30, 2010)
- 4. Summer Yearling Bull25 20 15 10
 (May 1 to Aug. 31, 2010)
- 5. Senior Bull Calf20 17 15 10
 (Sept. 1 to Dec. 31, 2010)
- 6. Junior Bull Calf20 17 15 10
 (Jan. 1 to Apr. 30, 2011)
- 7. Cow, 2 yrs. old and over25 20 15 10 5
- 8. Sr. Yearling Heifer25 20 15 10 5
 (Sept. 1 to Dec. 31, 2009)
- 9. Junior Yearling Heifer25 20 15 10 5
 (Jan. 1 to Apr. 30, 2010)
- 10. Summer Yearling Heifer25 20 15 10 5
 (May 1 to Aug. 31, 2010)
- 11. Senior Heifer Calf20 17 15 10 5
 (Sept. 1 to Dec. 31, 2010)
- 12. Junior Heifer Calf20 17 15 10 5
 (Jan. 1 to Apr. 30, 2011)

GROUPS

13. Get of Sire (3 animals get of sire, either sex).....	25	20	15	10
14. Pair of Calves	25	20	15	10
15. Pair of Yearlings	25	20	15	10
16. Pair of Females	25	20	15	10
17. Pair of Bulls	25	20	15	10

CHAMPIONS

Grand Champion Bull.....	Rosette
Reserve Champion Bull	Rosette
Grand Champion Female	Rosette
Reserve Champion Female	Rosette

**Department No. 4
DAIRY CATTLE**

**Show Meeting - Sunday, August 15 at 2:30 p.m.
at the Show Ring**

**Judging Friday 9:00 a.m.
Open Class Show and Junior Fair
Combined Show!**

**Judging will start with
Showmanship
Senior - Intermediate - Junior - Kiddie**

**Breeds will rotate immediately following
Showmanship**

Will not break for lunch.

**Entry fee \$2.50 per head
Entries close July 31**

**DAVE CORNISH, SUPERINTENDENT
2572 Edwards Road, North Fairfield, Ohio
Phone (419) 752-6293**

**Daphne Cornish, Asst. Superintendent
2572 Edwards Road, North Fairfield, Ohio
Phone (419) 752-6293**

**Troy Knoll, Asst. Superintendent
415 Old State Road, North Fairfield, Ohio
Phone (419) 744-2152**

Strongly recommended that all cattle be vaccinated with 9-way vaccine.

All animals over 2 years old should be registered.

No bedding furnished. Only straw, sawdust or woodchips can be used.

No stalls will be reserved unless entry is accompanied by payment of stall fees.

Competition open to world, except counties excluding Huron County.

All animals regardless of age, except Junior Calves, must be recorded in the name of the exhibitor on the records of their respective associations.

Each exhibitor restricted to two entries in single and one in groups.

Animals in classes 22-25 must be shown in previous classes.

All exhibits released 8:00 A.M. Sunday.

- CLASS A - AYRSHIRES**
- CLASS B - MILKING SHORTHORNS**
- CLASS C - BROWN SWISS**
- CLASS D - JERSEYS**
- CLASS E - GUERNSEYS**
- CLASS F - HOLSTEINS**

1. Bull Calf, born after Aug. 31, 2010	15	10		
2. Yearling Bull, born after Aug. 31, 2009 before Aug. 31 2010	15	10		
3. Champion Bull				Rosette
4. Jr. Heifer Calf, born after Feb. 28, 2011.....	20	15	12	9 5
5. Intermediate Heifer Calf, born after Nov. 30, 2010 before Mar. 1, 2011	20	15	12	9 5

6. Senior Heifer Calf, born after Aug. 31, 2010 before Nov. 30, 2010	20	15	12	9 7
7. Summer Yearling Heifer, born after May 31, 2010 before Sept. 1, 2010	20	15	12	10 8
8. Jr. Yearling Heifer, born after Feb. 28, 2010, before May 31, 2010	20	15	12	10 8
9. Intermediate - Senior Yearling, born after Nov. 30, 2009 before Mar. 1, 2010	20	15	12	10 8
10. Sr. Yearling Heifer, born Aug. 31, 2009 before Dec. 1, 2009.....	20	15	12	10 8
11. Junior Champion - Female				Rosette
12. Junior Best - 3 Females (Bred & owned by exhibitor)	20	15	10	
13. Two Year Old Cow, born after Aug. 31, 2008 before Sept. 1, 2009	25	20	15	10
Best Uddered Cow in Class 13	5			
14. Three Year Old Cow, born after Aug. 31, 2007 before Sept. 1, 2008	25	20	15	10
Best Uddered Cow in Class 14	5			
15. Four Year Old Cow, born after Aug. 31, 2006 before Sept. 1, 2007.....	25	20	15	10
Best Uddered Cow in Class 15	5			
16. Aged Cow, born before Sept. 1, 2006	25	20	15	10
Best Uddered Cow in Class 16	5			
17. Dry Cow, 3 yrs. & Older	25	20	15	10
18. Senior Champion Female				Rosette
19. Grand Champion Female.....				Rosette
20. Best Uddered Cow	25	20	15	10
21. Best Three Sr. Females Bred by Exhibitor	25	20	15	
22. Produce of Dam (2 animals any age - Produce of one Dam)	20	17	15	10
23. Highest of Breed - Milk (One premium per exhibitor)	20	15	10	
24. Highest of Breed - Fat (One premium per exhibitor)	20	15	10	
25. Highest of Breed - Protein (One premium per exhibitor)	20	15	10	

**Department No. 8
OPEN CLASS STEER & MARKET HEIFER
SHOW
OPEN CLASS FEEDER & FEEDER HEIFER
CALF SHOW**

Judging Monday 7:00 p.m.

**JOHN FEICHTNER, SUPERINTENDENT
3254 Townline Rd. 12, Willard, Ohio 44890
Phone (419) 933-4653**

Pay daily admission at the gate, or purchase a season or membership ticket.

Entry with season/membership or Jr. Fair ticket is \$15.00 per entry.

Entry without season/membership or Jr. Fair pass is \$25.00 for the first entry and \$15.00 for each additional entry.

Entries may be made by July 31 in the Fair secretary's Office or the day of show

All cattle must be in by 4:00 P.M. with weigh-in until 6:00 P.M.

Classes will be divided by weight.

All steers must have been born on or after Jan. 1, 2009.

Feeder calves born after Jan. 1, 2010.

All steers must be 100% beef.

All steers must weigh a minimum of 900 lbs.

Fair Board not liable for accidents.

CLASS A - PREMIUMS - STEERS

1st	\$250.00
2nd	\$150.00

CLASS B - PREMIUMS - FEEDER STEER & MARKET FEEDER HEIFER

1st	\$100.00
2nd	\$75.00

CLASS C - PREMIUMS - FEEDER HEIFERS

1st	\$100.00
2nd	\$75.00

**Department No. 10
SHEEP**

**Judging Wednesday approximately 1:00 p.m.
(Immediately following Jr. Fair Sheep Show)
Wilson Building**

**Entry fee \$2.00 per head
Entries close July 31st**

PAUL & DONNA LORTCHER, SUPERINTENDENTS
2204 State Route 162 E., N. Fairfield, Ohio 44855
Phone (419) 929-0502

This years show will be one day only (haul in, show, go home).
No pens will be available.

Competition open to world except counties excluding Huron County.

Exhibitors must specify on entry blank the number of animals entered.

All animals over 6 months must be recorded and appear in the name of the exhibitor on the records of their respective associations.

Animals recorded in individual names cannot be shown in the name of firm or of the farm, but must be shown exactly as they appear on the records.

This rule is fair to all and will be strictly enforced.

Sheep must be shown in the ring to be awarded placings and/or prize monies.

Pens of lambs, consists of 2 rams and 2 ewes.

Exhibitors are restricted to two entries in single and one in group classes.

Aged animals 2 years old and over. Yearlings must be 1 year old and under 2, and lambs under 1 year.

CLASS A - MEAT BREEDS

**CHEVIOT, DORSET, FINN, HAMPSHIRE,
MONTADALE, OXFORD, SHROPSHIRE,
SOUTHDOWN, SUFFOLK, TUNIS**

CLASS B - WOOL BREEDS

**COLUMBIA, CORRIEDALE, MERINO,
ROMBOUILLETS, TARGHEE**

CLASS C - CROSS BREEDS

1. Aged Ram	12	8	6	5
2. Yearling Ram	12	8	6	5
3. Ram Lamb	12	8	6	5
4. Pair of Ram Lambs	12	8	6	5
5. Aged Ewe	12	8	6	5
6. Yearling Ewe	12	8	6	5
7. Ewe Lamb	12	8	6	5
8. Pair of Ewe Lambs	12	8	6	5
9. Pen of Lambs (2 Ewes, 2 Rams)	12	8	6	5
10. Exhibitor Flock (Ram, 2 Yearling Ewes, 2 Ewe Lambs)	12	8	6	5
11. Grand Champion Ram	Rosette			
12. Grand Champion Ewe	Rosette			
13. Champion All Breeds				
Ram	Rosette			
Ewe	Rosette			

**Enter the Rooster Crowing Contest!
Saturday, August 21st
7:00 A.M.**

**Department No. 11
POULTRY**

Judging Wednesday 9:00 a.m.

**Entry fee \$.50 per head
Entries close July 31st.**

A copy of your flock's Pullorum Papers or Hatchery Papers
MUST accompany entry.

JEAN BERNARD, SUPERINTENDENT
186 ST. RT. 99
Willard, Ohio 44890
Phone (419) 935-2275

Pam Bernard, Asst. Superintendent
Olivia Gates, Asst. Superintendent

The American Standard of Excellence as revised by the American Poultry Association will be the guide for the judges in awarding premiums. The comparison system of judging will be used.

Exhibits must be in place by 8:00 A.M. Monday.

Nothing released before 8:00 A.M. Sunday.

MUST BE PICKED UP BY 4:00 P.M. SUNDAY.

Superintendent will feed open class only.

Competition open to all counties except counties excluding Huron County.

Limit by one exhibitor, not over one hundred fifty (150) entries.

All birds subject to veterinarian s inspection before being placed in coops.

Be sure to review health regulations.

The Superintendent reserves the right to reject any entry; if in his opinion it is for the betterment of the show.

No birds can compete in more than one class. Birds must be entered in correct class.

Drinking and feed cups must be furnished by the exhibitor.

Limit is one entry per entry lot.

Entry fee - Single bird 50 cents.

Entries will be accepted as long as coops are available.

Diseased poultry excluded. At judges discretion, no premium will be awarded to an unworthy specimen, i.e., bird of low vitality, bird lacking in breed characteristic, extremely immature specimen and the like.

Feed - No Scratch for Pigeons

Trophies awarded for:

- Grand Champion, Standard Class
- Reserve Champion, Standard Class
- Grand Champion, Bantam Class
- Reserve Champion, Bantam Class
- Best Duck
- Best Goose
- Best Turkey

Lot 1. Cock	3	2	1
Lot 2. Hen	3	2	1
Lot 3. Cockerel	3	2	1
Lot 4. Pullet	3	2	1

STANDARD CLASS - AMERICAN

- CLASS AA - PLYMOUTH ROCK - BARRED**
- CLASS AB - PLYMOUTH ROCK - WHITE**
- CLASS AC - PLYMOUTH ROCK - PARTRIDGE**
- CLASS AD - PLYMOUTH ROCK - COLUMBIAN**
- CLASS AE - PLYMOUTH ROCK - BUFF**
- CLASS AF - PLYMOUTH ROCK - SILVER-PENCILED**
- CLASS AG - WYANDOTTE - WHITE**
- CLASS AH - WYANDOTTE - PARTRIDGE**
- CLASS AI - WYANDOTTE - BLACK**
- CLASS AJ - WYANDOTTE - GOLDEN LACE**
- CLASS AK - WYANDOTTE - COLUMBIAN**
- CLASS AL - WYANDOTTE - BUFF**
- CLASS AM - WYANDOTTE - SILVER-PENCILED**
- CLASS AN - WYANDOTTE - SILVER LACED**

CLASS AO - RHODE ISLAND RED - S.C.
 CLASS AP - RHODE ISLAND RED - R.C.
 CLASS AQ - JERSEY GIANTS - BLACK
 CLASS AR - JERSEY GIANTS - WHITE
 CLASS AS - NEW HAMPSHIRE - RED
 CLASS AT - A.O.V. AMERICAN

STANDARD CLASS - ASIATIC
 CLASS BA - BRAHMA - LIGHT
 CLASS BB - BRAHMA - DARK
 CLASS BC - BRAHMA - BUFF
 CLASS BD - COCHIN - WHITE
 CLASS BE - COCHIN - BLACK
 CLASS BF - COCHIN - PARTRIDGE
 CLASS BG - COCHIN - BUFF
 CLASS BH - LANGSHAN - WHITE
 CLASS BI - LANGSHAN - BLACK
 CLASS BJ - A.O.V. ASIATIC

STANDARD CLASS - ENGLISH
 CLASS CA - ORPINGTON - BUFF
 CLASS CB - ORPINGTON - WHITE
 CLASS CC - ORPINGTON - BLACK
 CLASS CD - SUSSEX - SPECKLED
 CLASS CE - CORNISH - WHITE
 CLASS CF - CORNISH - DARK
 CLASS CG - CORNISH - WHITE-LACED RED
 CLASS CH - AUSTRALORPS - BLACK
 CLASS CI - A.O.V. ENGLISH

STANDARD CLASS - MEDITERRANEAN
 CLASS DA - LEGHORN - S.C. DARK BROWN
 CLASS DB - LEGHORN - S.C. LIGHT BROWN
 CLASS DC - LEGHORN - R.C. DARK BROWN
 CLASS DD - LEGHORN - R.C. LIGHT BROWN
 CLASS DE - LEGHORN - S.C. WHITE
 CLASS DF - LEGHORN - R.C. WHITE
 CLASS DG - LEGHORN - S.C. BUFF
 CLASS DH - LEGHORN - S.C. BLACK
 CLASS DI - LEGHORN - S.C. SILVER
 CLASS DJ - MINORCA - S.C. BLACK
 CLASS DK - MINORCA - R.C. BLACK
 CLASS DL - MINORCA - S.C. WHITE
 CLASS DM - MINORCA - R.C. WHITE
 CLASS DN - MINORCA - S.C. BUFF
 CLASS DO - SPANISH - WHITE LACED BLACK
 CLASS DP - BLUE ANDALUSIAN
 CLASS DQ - ANCONA - S.C.
 CLASS DR - ANCONA - R.C.
 CLASS DS - BUTTERCUP
 CLASS DT - A.O.V. MEDITERRANEAN

STANDARD CLASS - POLISH
 CLASS EA - WHITE CRESTED BLACK
 CLASS EB - GOLDEN
 CLASS EC - SILVER
 CLASS ED - WHITE
 CLASS EF - BUFF LACED
 CLASS EG - A.O.V. POLISH

STANDARD CLASS - FRENCH
 CLASS FA - HOUDAN - MOTTLED
 CLASS FB - HOUDAN - WHITE
 CLASS FC - CREVACEURS - BLACK
 CLASS FD - FAVEROLLES - SALMON
 CLASS FE - A.O.V. FRENCH

STANDARD CLASS - HAMBURGS
 CLASS GA - GOLDEN - SPANGLED
 CLASS GB - SILVER - SPANGLED
 CLASS GC - BLACK
 CLASS GD - WHITE
 CLASS GE - GOLDEN PENCILED
 CLASS GF - SILVER PENCILED
 CLASS GG - A.O.V. HAMBURGS

STANDARD CLASS - ORIENTALS
 CLASS HA - SUMATRAS - BLACK
 CLASS HB - MALAY - BLACK BREASTED RED
 CLASS HC - A.O.V. ORIENTALS

STANDARD CLASS - CONTINENTAL
 CLASS IA - LAKEN VALDERS
 CLASS IB - CAMPINES - SILVER
 CLASS IC - CAMPINES - GOLDENS
 CLASS ID - A.O.V. CONTINENTAL

STANDARD CLASS - MODERN
 CLASS JA - BLACK BREASTED RED
 CLASS JB - BROWN RED
 CLASS JC - SILVER DUCKWING
 CLASS JD - BIRCHEN
 CLASS JE - RED PYLE
 CLASS JF - WHITE
 CLASS JG - A.O.V. MODERN

BANTAMS - SINGLE COMB
 CLASS KA - JAPANESE - BLACK TAILED
 CLASS KB - JAPANESE - WHITE
 CLASS KC - JAPANESE - BLACK
 CLASS KD - PLYMOUTH ROCK - BARRED
 CLASS KE - PLYMOUTH ROCK - WHITE
 CLASS KF - PLYMOUTH ROCK - PARTRIDGE
 CLASS KG - PLYMOUTH ROCK - SILVER PENCILED
 CLASS KH - PLYMOUTH ROCK - BUFF
 CLASS KI - PLYMOUTH ROCK - COLUMBIAN
 CLASS KJ - RHODE ISLAND RED - S.C.
 CLASS KK - RHODE ISLAND RED - R.C.
 CLASS KL - LEGHORNS S.C. - WHITE
 CLASS KM - LEGHORNS S.C. - LIGHT BROWN
 CLASS KN - LEGHORNS S.C. - BLACK
 CLASS KO - A.O.V. SINGLE COMB

BANTAMS - ROSE COMB
 CLASS LA - SEBRIGHT - GOLDEN
 CLASS LB - SEBRIGHT - SILVER
 CLASS LC - ROSECOMB - BLACK
 CLASS LD - ROSECOMB - WHITE
 CLASS LE - ROSECOMB - BLUE
 CLASS LF - WYANDOTTE - WHITE
 CLASS LG - WYANDOTTE - BLACK
 CLASS LH - WYANDOTTE - BUFF
 CLASS LI - WYANDOTTE - PARTRIDGE
 CLASS LJ - WYANDOTTE - SILVER PENCILED
 CLASS LK - WYANDOTTE - SILVER LACED
 CLASS LL - WYANDOTTE - GOLDEN LACED
 CLASS LM - WYANDOTTE - BLUE
 CLASS LN - WYANDOTTE - COLUMBIAN
 CLASS LO - HAMBURGS - SILVER SPANGLED
 CLASS LP - CORNISH - DARK
 CLASS LQ - CORNISH - WHITE
 CLASS LR - CORNISH - WHITE LACED RED
 CLASS LS - A.O.V. ROSE COMB

BANTAMS - OLD ENGLISH
 CLASS MA - BLACK BREASTED RED
 CLASS MB - BROWN RED
 CLASS MC - SILVER DUCKWING
 CLASS MD - RED PYLE
 CLASS ME - WHITE
 CLASS MF - BLACK
 CLASS MG - SPANGLED
 CLASS MH - A.O.V. OLD ENGLISH

BANTAMS - FEATHER LEGGED
 CLASS NA - COCHINS - BUFF
 CLASS NB - COCHINS - PARTIDGE
 CLASS NC - COCHINS - WHITE
 CLASS ND - COCHINS - BLACK
 CLASS NE - BRAHMAS - BUFF
 CLASS NF - BRAHMAS - DARK
 CLASS NG - BRAHMAS - LIGHT
 CLASS NH - SILKIES
 CLASS NI - MILLEFLEUR
 CLASS NJ - A.O.V. FEATHER LEGGED

BANTAMS - MODERN GAME
 CLASS OA - BLACK BREASTED RED
 CLASS OB - BROWN RED
 CLASS OC - SILVER DUCKWING
 CLASS OD - BIRCHEN
 CLASS OE - RED PYLE
 CLASS OF - WHITE
 CLASS OG - BLACK
 CLASS OH - A.O.V. MODERN GAME
 BANTAMS - POLISH

CLASS PA - WHITE CRESTED BLACK
 CLASS PB - GOLDEN
 CLASS PC - SILVER
 CLASS PD - WHITE
 CLASS PE - BUFF LACED
 CLASS PF - A.O.V. POLISH

DUCKS

AN OLD DRAKE IS A MALE BIRD HATCHED PRIOR TO FAIR YEAR.
 AN OLD DUCK IS A FEMALE BIRD HATCHED PRIOR TO FAIR YEAR.
 A YOUNG DRAKE IS A MALE BIRD HATCHED IN YEAR OF FAIR.
 A YOUNG DUCK IS A FEMALE BIRD HATCHED IN YEAR OF FAIR.

CLASS QA - PEKIN
 CLASS QB - ROUEN
 CLASS QC - MALLARD
 CLASS QD - AYLESBURY
 CLASS QE - BLACK CAYUGA
 CLASS QF - GRAY CALL
 CLASS QG - WHITE CALL
 CLASS QH - BLACK EAST INDIA
 CLASS QI - COLORED MUSCOVY
 CLASS QJ - WHITE MUSCOVY
 CLASS QK - BLUE MUSCOVY
 CLASS QL - FAWN RUNNER
 CLASS QM - WHITE RUNNER
 CLASS QN - PENCILED INDIAN RUNNER
 CLASS QO - GRAY RUNNER
 CLASS QP - KHAKI CAMPBELL
 CLASS QQ - BALI
 CLASS QR - BUFF
 CLASS QS - ANY OTHER CALL DUCK

GEESE

AN OLD GANDER IS A MALE BIRD HATCHED PRIOR TO FAIR YEAR.
 AN OLD GOOSE IS A FEMALE BIRD HATCHED PRIOR TO FAIR YEAR.
 A YOUNG GANDER IS A MALE BIRD HATCHED IN YEAR OF FAIR.
 A YOUNG GOOSE IS A FEMALE BIRD HATCHED IN YEAR OF FAIR.

CLASS RA - TOULOUSE
 CLASS RB - EMBDEN
 CLASS RC - AFRICAN
 CLASS RD - WHITE CHINESE
 CLASS RE - BROWN CHINESE
 CLASS RF - EGYPTIAN
 CLASS RG - SEBASTAPOL
 CLASS RH - BUFF
 CLASS RI - PILGRIM
 CLASS RJ - POMERANIAN
 CLASS RK - CANADIAN - WILD

TURKEY

AN OLD TOM IS A MALE BIRD HATCHED PRIOR TO FAIR YEAR.
 AN OLD HEN IS A FEMALE BIRD HATCHED PRIOR TO FAIR YEAR.
 A YOUNG TOM IS A MALE BIRD HATCHED IN YEAR OF FAIR.
 A YOUNG HEN IS A FEMALE BIRD HATCHED IN YEAR OF FAIR.

CLASS SA - BRONZE
 CLASS SB - WHITE HOLLAND
 CLASS SC - BOURBON RED
 CLASS SD - NARAGANSETT
 CLASS SE - ROYAL PALM
 CLASS SF - A.O.V

PIGEONS

LOT 1 - OLD COCK
 LOT 2 - OLD HEN
 LOT 3 - YOUNG COCK
 LOT 4 - YOUNG HEN

CLASS TA - HOMERS
 CLASS TB - ROLLERS
 CLASS TC - MODENAS
 CLASS TD - FANTAIL
 CLASS TE - HELMETS
 CLASS TF - NUNS
 CLASS TG - POUTERS
 CLASS TH - CROOPERS
 CLASS TI - TIPPLERS
 CLASS TJ - PARLORS ROLLERS
 CLASS TK - TRUMPETERS
 CLASS TL - KOMORNERS
 CLASS TM - TUMBLERS
 CLASS TN - GERMAN BEAUTY
 CLASS TO - CHINESE OWLS
 CLASS TP - ANY OTHER VARIETY CLEAN LEG
 CLASS TQ - ANY OTHER VARIETY FEATHER LEG

**Department No. 12
 RABBITS**

Judging Tuesday 8:00 a.m.

JOHN A. BORSICK, SUPERINTENDENT
 516 Old State Road, North Fairfield, Ohio 44855
 Phone (419) 744-2243

Randy Eschen, Asst. Superintendent
 77 Christie Avenue, Norwalk, Ohio 44857
 Phone (419) 663-1253

Gary Palm, Asst. Superintendent
 616 Old State Road, North Fairfield, Ohio 44855
 Phone (419) 744-2464

**MAIL ALL ENTRIES TO THE FAIR OFFICE BY JULY 31.
 USE OFFICIAL ARBA FORM IN CENTER OF BOOK.**

**Best of Show Trophy plus \$10
 Reserve in Show Trophy plus \$5
 Second Reserve in Show Trophy plus \$5
 Trophy Meat Pen**

**Trophies by:
 Huron Co. Rabbit Breeders Association**

To be run under the supervision of the Huron Co. Rabbit Breeders Association and the Huron Co. Agricultural Society.

ENTRIES CLOSE - JULY 31

Exhibits must be in place by 6:00 P.M. Sunday unless prior arrangements are made. All exhibits must be in place by 9:55 P.M. The barn will be closed at 10:00 P.M., NO EXCEPTIONS.

Judging - 8:00 A.M. Tuesday

This will be an ARBA sanctioned show and will be governed according to the latest rules of the ARBA. No substituting. No added classes.

Anyone wishing to sanction a breed needs to contact John Borsick at the above address and/or phone number by July 1st. Sanction fee must accompany request.

In addition to membership/season ticket an entry fee of 50 cents for single rabbit coop, \$1.00 for double coop, \$1.50 for doe and litter (must consist of not less than doe and four (4) or more young not over ten (10) weeks old. Entry fee is \$1.00 per meat pen and 50 cents per fryer.

Coops to be furnished by the Huron County Fair Board.

We will not be responsible for loss or damage to stock. However, all precautions will be taken to protect entries.

Entries are limited to four (4) per exhibitor in the fur class.

PLEASE NOTE: Sex and Class must be filled in on the entry form (i.e. Junior, Intermediate, Senior).

Diseased stock will not be accepted. All rabbits must be properly ear marked.

Will reserve the right to substitute judge if necessary.

All exhibits released 8:00 A.M. Sunday.

We reserve the right to reject entries when coops are full.

Anyone wishing to sell Rabbits during the Fair may do so, but will be assessed a 10% fee if not a Member in good standing of the Huron County Rabbit Breeders.

PREMIUMS FOR SINGLE RABBITS

1 in a class	2.50			
2 in a class	3.00	2.50		
3 to 6 in a class	3.50	3.00	2.50	2.00
.....			1.50	1.00
7 or more in a class	4.00	3.50	3.00	2.50
.....		1.50	1.00	1.00

PREMIUMS FOR DOE AND LITTER

1 in a class	4.00			
2 in a class	4.50	4.00		
3 or more in a class	5.50	5.00	4.50	4.00
.....			2.00	1.00

PREMIUMS FOR RABBIT DISPLAYS

Best in display of any one breed with 6 classes, Rosette				
Points to count	10.00	7.50	5.00	3.00
2.00				
Best display of any one breed with 4 classes, Rosette				
Points to count	10.00	7.50	5.00	3.00
2.00				

PREMIUMS FOR MEAT RABBITS

Pen	10.00	7.50	5.00	3.00	2.00
Fryer	6.00	5.00	4.00	3.00	2.00

PREMIUMS FOR BEST OVERALL FUR

.....	10.00	7.50	5.00	3.00	2.00
-------	-------	------	------	------	------

**Department No. 13
FARM AND GARDEN PRODUCTS**

Judging Monday 12:00 p.m. (Noon)

Entries close July 31st

STEVE & JUDY ZIMMERMAN, SUPERINTENDENTS
1716 Jericho Road, Norwalk, Ohio 44857
Phone (419) 668-0940

Tom & Darlene Tyler, Asst. Superintendents
5141 Huber Road, Norwalk, Ohio 44857

All exhibits are to be in place by 8:00 A.M. Monday. The superintendent will be present on Sunday evening from 6:30 to 9:30 P.M. for the purpose of receiving exhibits.

All articles released at 8:00 A.M. Sunday.

All exhibits shown must be grown by the exhibitor within the current crop year and if requested, certify to the judge that it was so grown.

Judges and/or Superintendents reserve the right to open and inspect all containers/jars.

Competition open to all counties except those excluding Huron County.

Exhibitors limited to one entry in each variety.

CLASS AA - CORN - NEW CROP - (10 ears each variety)

1. French	2.00	1.00
2. DeKalb	2.00	1.00
3. Pioneer	2.00	1.00
4. Gries	2.00	1.00
5. Schlessman	2.00	1.00
6. Cropland Genetics	2.00	1.00
7. Any other variety (state variety)	2.00	1.00

CLASS AB - POPCORN - NEW CROP - (10 ears each color)

1. Yellow	2.00	1.00
2. White	2.00	1.00
3. Any other	2.00	1.00

CLASS AC - SWEETCORN - NEW CROP - (10 ears each color)

1. Yellow	2.00	1.00
2. White	2.00	1.00
3. Bicolor	2.00	1.00

CLASS AD - CORN - PREVIOUS YEAR'S CROP - (1 Quart)

1. Shelled Corn	2.00	1.00
-----------------------	------	------

CLASS AE - CORN STALKS - (Put in bag, include roots)

1. Best 3 Stalks	2.00	1.00
2. Tallest stalk corn (1) Will measure from top of brace roots	2.00	1.00

CLASS AF - SOFT RED WHEAT - (1 Quart new crop)

1. Hopewell	2.00	1.00
2. Freedom	2.00	1.00
3. Any other public variety (name variety)	2.00	2.00
4. Any private variety (name variety)	2.00	1.00

CLASS AG - OTHER SMALL GRAINS (1 Quart new crop)

1. Oats	2.00	1.00
2. Spelt	2.00	1.00
3. Barley	2.00	1.00
4. Rye	2.00	1.00

CLASS AH - SMALL SEEDS - (1 Quart)

1. Red clover	2.00	1.00
2. Alsike clover	2.00	1.00
3. Ladino clover	2.00	1.00
4. Timothy	2.00	1.00

CLASS AI - SOYBEANS (3 Stalks)

1. Schlessman	2.00	1.00
2. French	2.00	1.00
3. Gries	2.00	1.00
4. DeKalb	2.00	1.00
5. Pioneer	2.00	1.00
6. Cropland Genetics	2.00	1.00
7. Any other private variety (name variety)	2.00	1.00
8. Any other public variety (name variety)	2.00	1.00

CLASS AJ - SOYBEANS

1. Soybeans 1 qt. Previous years crop	2.00	1.00
2. Soybeans 1 stalk (most pods)	2.00	1.00

CLASS AK - SHEATHS (20 stalks 20 inches long)

1. Wheat	2.00	1.00
2. Oats	2.00	1.00
3. Rye	2.00	1.00
4. Barley	2.00	1.00
5. Spelt	2.00	1.00

CLASS AL - BEANS, DRY (1 Quart)

1. White navy	1.50	1.00
2. Bush lima	1.50	1.00
3. Kidney	1.50	1.00
4. Any other variety	1.50	1.00

CLASS AM - BEANS IN POD (1/2 Pound)

1. Yellow pod	1.50	1.00
2. Green pod	1.50	1.00
3. Purple lima	1.50	1.00
4. Bush lima	1.50	1.00
5. Pole lima	1.50	1.00
6. Baby lima	1.50	1.00
7. Any other variety	1.50	1.00

CLASS AN - BEETS (5 with 1" tops)

1. Detroit Red	1.50	1.00
2. Early Wonder	1.50	1.00
3. Sugar	1.50	1.00
4. Stock Beets (3)	1.50	1.00
5. Golden	1.50	1.00
6. Any other variety	1.50	1.00

CLASS AO - BROCCOLI (1 Head)

1. Any variety	1.50	1.00
----------------------	------	------

CLASS AP - BRUSSEL SPROUTS (Quart)

1. Any variety	1.50	1.00
----------------------	------	------

CLASS AQ - CABBAGE

1. Danish Ballhead	1.50	1.00
2. Golden Acre	1.50	1.00
3. Wakefield Jersey	1.50	1.00
4. Red Dutch	1.50	1.00
5. Michihli	1.50	1.00
6. Flowering	1.50	1.00
7. Any other variety	1.50	1.00

CLASS AR - CARROTS (6 1" tops)

1. Danvers, half long	1.50	1.00
2. Nantes, half long	1.50	1.00
3. Imperator	1.50	1.00

4. Royal Chantenay	1.50	1.00
5. Gold Pak	1.50	1.00
6. Any other variety	1.50	1.00
CLASS AS - CAULIFLOWER (1 Head)		
1. Any variety	1.50	1.00
CLASS AT - CELERY (1 Bunch without roots)		
1. Any variety	1.50	1.00
CLASS AU - CUCUMBERS (6 each)		
1. Slicers	1.50	1.00
2. Pickling	1.50	1.00
3. White Wonder	1.50	1.00
4. Any other variety	1.50	1.00
CLASS AV - EGGS (1 Dozen)		
1. White	1.50	1.00
2. Brown	1.50	1.00
3. Araucanas	1.50	1.00
CLASS AW - EGGPLANT (3)		
1. Any variety	1.50	1.00
CLASS AX - ENDIVE (5 Leaves in bag, no roots)		
1. Any variety	1.50	1.00
CLASS AY - KALE (1 Plant with 1" Stem)		
1. Flowering	1.50	1.00
2. Any variety	1.50	1.00
CLASS AZ - KOHLRABI (3)		
1. Any variety	1.50	1.00
CLASS BA - LETTUCE		
1. Great Lakes - Iceberg	1.50	1.00
2. Leaf (5 leaves in bag, no roots).....	1.50	1.00
CLASS BB - MUSKMELONS (1 Each)		
1. Crenshaw	1.50	1.00
2. Iroquois	1.50	1.00
3. Honey Rock	1.50	1.00
4. Any other variety	1.50	1.00
CLASS BC - OKRA (5 Each)		
1. Any variety	1.50	1.00
CLASS BD - ONIONS (5 Each with 2" tops)		
1. Red	1.50	1.00
2. Yellow	1.50	1.00
3. White	1.50	1.00
4. Sets - one quart	1.50	1.00
CLASS BE - PARSNIPS (6 Each)		
1. Any variety	1.50	1.00
CLASS BF - PEANUTS (Whole Plant/Peanuts Attached)		
1. Any variety	1.50	1.00
CLASS BG - PEAS (1/2 Pound)		
1. Any variety	1.50	1.00
CLASS BH - PEPPERS (5 Each)		
1. Green Sweet	1.50	1.00
2. Red Sweet	1.50	1.00
3. Yellow Sweet	1.50	1.00
4. Hot Red	1.50	1.00
5. Hot Yellow	1.50	1.00
CLASS BI - POTATOES (1 Peck)		
1. Irish Cobbler	1.50	1.00
2. Katahdan	1.50	1.00
3. Kennebec	1.50	1.00
4. Seabago	1.50	1.00
5. Yukon Gold	1.50	1.00
6. Red	1.50	1.00
7. Sweet	1.50	1.00
8. Any other variety	1.50	1.00
CLASS BJ - PUMPKINS (1 Each)		
1. Pie	1.50	1.00

2. Field	1.50	1.00
CLASS BK - RADISHES (6 without tops)		
1. White	1.50	1.00
2. Red	1.50	1.00
CLASS BL - RHUBARB (6 Stalks, trimmed)		
1. Any variety	1.50	1.00
CLASS BM - RUTABAGA (3)		
1. Any variety	1.50	1.00
CLASS BN - SPINACH (5 Leaves in bag, no roots)		
1. Any variety	1.50	1.00
CLASS BO - SQUASH (1)		
1. Acorn	1.50	1.00
2. Butternut	1.50	1.00
3. Crookneck	1.50	1.00
4. Hubbard	1.50	1.00
5. Straightneck	1.50	1.00
6. White Bush Scallop	1.50	1.00
7. Yellow Bush Scallop	1.50	1.00
8. Zucchini	1.50	1.00
9. Any other variety	1.50	1.00
CLASS BP - SUNFLOWERS		
1. Multiflowered (with roots in bag)	1.50	1.00
2. Large Head (with 1" long stem attached).....	1.50	1.00
CLASS BQ - SWISS CHARD (1 Bunch)		
1. Any variety	1.50	1.00
CLASS BR - TOMATOES (5 Each)		
1. Red	1.50	1.00
2. Yellow	1.50	1.00
3. Pink	1.50	1.00
4. Cherry	1.50	1.00
5. Italian	1.50	1.00
CLASS BS - TURNIPS (5 Each with 1" tops)		
1. Any variety	1.50	1.00
CLASS BT - WATERMELONS (1 Each)		
1. Sugar Baby	1.50	1.00
2. Crimson Sweet	1.50	1.00
3. Charleston Gray	1.50	1.00
4. Any other variety	1.50	1.00
CLASS BU - MISCELLANEOUS		
1. Best Freak Fruit or Vegetable	2.00	1.00
2. Best display peppers, 5 ea., 3 varieties	5.00	1.00
3. Best display tomatoes, 5 ea., 3 varieties	5.00	1.00
4. Best display ornamental corn	2.00	1.00
5. Tallest sunflower(with roots in bag)	2.00	1.00
6. Longest ear corn	2.00	1.00
7. Longest carrot	2.00	1.00
8. Longest cucumber	2.00	1.00
9. Longest bean	2.00	1.00
10. Heaviest squash	2.00	1.00
11. Heaviest pumpkin	10.00	5.00
12. Heaviest onion	2.00	1.00
13. Heaviest red beet	2.00	1.00
14. Heaviest potato	2.00	1.00
15. Heaviest cabbage	2.00	1.00
16. Heaviest tomato	2.00	1.00
17. Best display of gourds	2.00	1.00
18. Oddest looking gourd (current year).....	2.00	1.00

CLASS BV - SPECIAL CLASSES

1. To the best exhibit of 12 products, 5 specimens of each in small products, 1 each of larger products as cabbage, melons, squash, etc. grown by an individual in a current crop year.

1st - \$25.00; 2nd - \$20.00; 3rd - \$15.00; 4th - \$10.00;

5th - \$5.00; and \$2.00 will be allowed each complete exhibit not winning a premium.

In order to give everyone an equal chance, the number of products exhibited will be strictly adhered to this year. If there are any questions, please ask the superintendent.

2. Plain Scarecrow - Equipped for Hanging - Must be made of wood, straw, paper, cloth, cardboard only. (May not be any more than 4 wide).

- 1st - \$25.00; 2nd - \$20.00; 3rd - \$15.00; 4th - \$10.00; and \$2.00 to each not winning a premium.
3. Creative Scarecrow - Self Standing - Can be made of any type of materials. (May not be more than 4' wide).
1st - \$25.00; 2nd - \$20.00; 3rd - \$15.00; 4th - \$10.00; and \$2.00 to each not winning a premium.
4. Most Creative Vegetable Item
1st - \$3.00; 2nd - \$2.00; 3rd - \$1.00

**Department No. 14
HAY SHOW**

**Judging Monday 1:00 p.m.
Entries close July 31st**

**SPONSORED BY
HURON SOIL & WATER CONSERVATION DISTRICT**

**DISTRICT SUPERVISORS - SUPERINTENDENTS
8 Fair Rd., Norwalk, Ohio 44857
Phone (419) 668-4113**

All entries must be of current year's growth and properly dried for storage.

All exhibits shown must be grown by exhibitor.
Entries limited to one entry in each class per family.

All exhibits must be in place, correctly labeled and entry cards attached by 8:00 A.M. Monday, and after that hour must not be handled, rearranged, or changed without permission from the superintendent.

All Exhibits released 8:00 A.M. - 12:00 Noon Sunday.

All entries must be picked up by 12:00 Noon Sunday

Competition open to farmers residing in Huron County.

Judging based on stage of maturity (30%), leafiness (30%), condition (20%), free of weed (10%), color (10%).

Only whole machine-bales will be accepted at the Exhibition in the following classes:

CLASS A - HAY EXHIBIT

- | | | | |
|---|---|---|---|
| 1. Alfalfa, 80% or more | 8 | 5 | 3 |
| 2. Mixed Hay, 40% alfalfa or clover | 8 | 5 | 3 |
| 3. Grass Hay, 60% or more | 8 | 5 | 3 |
| 4. Clover Hay, 80% or more | 8 | 5 | 3 |

Hay will be exhibited in the Agronomy Building.

All prize money will be provided by the Huron Soil & Water Conservation District.

Grand Champion Hay.....Rosette

In addition, the District will award a trophy to the Grand Champion Entry at the Huron SWCD Annual Banquet in December.

SILAGE SHOW

All exhibits shown must have been grown by exhibitor, and harvested within one year prior to the fair.

Exhibitors limited to one entry in each variety.

Each exhibit, consisting of about 2 quarts of silage, shall be in a tightly closed plastic bag to keep air out and moisture in. The sample may be taken at any time and kept in the home freezer until fair time.

All exhibits must be in place, correctly labeled and entry cards attached, by 8:00 A.M. Monday, and after that hour must not be handled, rearranged, or changed without permission from the superintendent.

Competition open to farmers residing in Huron County.

Exhibits released at 8:00 A.M. Sunday.

Exhibits will be judged by rules of the previous State Fair Silage show. Silage will be exhibited in the Agronomy Building.

All entries must be fermented

CLASS B - SILAGE EXHIBIT

- | | | |
|--------------------------------------|---|---|
| 1. Corn Silage | 8 | 5 |
| 2. Haylage (must be fermented) | 8 | 5 |

**Enter the Rooster Crowing Contest!
Saturday, August 21st
7:00 A.M.**

**Department No. 15
HORTICULTURE PRODUCTS**

**Judging Monday 12:00 p.m.
Entries close July 31st**

**STEVE & JUDY ZIMMERMAN, SUPERINTENDENTS
1716 Jericho Road, Norwalk, Ohio 44857
Phone (419) 668-0940**

**Tom & Darlene Tyler, Asst. Superintendents
5141 Huber Road, Norwalk, Ohio 44857**

All fruit must be in place by 8:00 A.M. Monday.

Exhibits released Sunday at 8:00 A.M.

Not responsible for articles after 9:00 A.M.

Only one plate of each variety or one collection of different varieties may be entered.

For exhibition purposes, a "plate" shall consist of five specimens unless otherwise specified to be correctly and distinctly labeled.

No awards will be made on fruit showing market insect or fungus injury.

All fruits must be grown in Ohio and must be grown by the exhibitor.

Single judge system will prevail.

Single plate, five specimens of each of the following varieties.

Trays, 12 specimens.

CLASS A - APPLES (Summer and Fall)

- | | | |
|-----------------------------|------|------|
| 1. Gala | 1.50 | 1.00 |
| 2. Honey Crisp | 1.50 | 1.00 |
| 3. Yellow Transparent | 1.50 | 1.00 |
| 4. Lodi | 1.50 | 1.00 |
| 5. Jonagold | 1.50 | 1.00 |
| 6. Paula Red | 1.50 | 1.00 |
| 7. Any Other | 1.50 | 1.00 |

CLASS B - APPLES (Winter)

- | | | |
|-----------------------------|------|------|
| 1. Baldwin | 1.50 | 1.00 |
| 2. Banana | 1.50 | 1.00 |
| 3. Cortland | 1.50 | 1.00 |
| 4. Golden Delicious | 1.50 | 1.00 |
| 5. Grimes Golden | 1.50 | 1.00 |
| 6. Jonathon | 1.50 | 1.00 |
| 7. McIntosh | 1.50 | 1.00 |
| 8. Northern Spy | 1.50 | 1.00 |
| 9. Ruby | 1.50 | 1.00 |
| 10. Red Delicious | 1.50 | 1.00 |
| 11. Rome Beauty | 1.50 | 1.00 |
| 12. Stayman Winesap | 1.50 | 1.00 |
| 13. Granny Smith | 1.50 | 1.00 |
| 14. Any other variety | 1.50 | 1.00 |

CLASS C - CRAB APPLES

- | | | |
|----------------------------|------|------|
| 1. Hyslop | 1.50 | 1.00 |
| 2. Transcendent | 1.50 | 1.00 |
| 3. Any other variety | 1.50 | 1.00 |

CLASS D - TRAYS

- | | | |
|---|------|------|
| 1. Three varieties (fall, 12 on plate) | 2.00 | 1.00 |
| 2. Six varieties (winter, 12 on plate) | 2.00 | 1.00 |
| 3. Twelve varieties (fall & winter, 12) | 2.00 | 1.00 |

CLASS E - PEACHES (Plate of 5)

- | | | |
|---|------|------|
| 1. Golden Jubilee | 1.50 | 1.00 |
| 2. Crest Haven..... | 1.50 | 1.00 |
| 3. Flame & Fury | 1.50 | 1.00 |
| 4. Elberta | 1.50 | 1.00 |
| 5. Hale Haven | 1.50 | 1.00 |
| 6. Harmony | 1.50 | 1.00 |
| 7. Kal Haven | 1.50 | 1.00 |
| 8. Red Haven | 1.50 | 1.00 |
| 9. White Peaches | 1.50 | 1.00 |
| 10. Display of 4 varieties (tray) | 1.50 | 1.00 |
| 11. Any other variety | 1.50 | 1.00 |
| 12. White Nectarines | 1.50 | 1.00 |
| 13. Yellow Nectarines | 1.50 | 1.00 |

CLASS F - PEARS (Plate of 5)

- | | | |
|----------------------------|------|------|
| 1. Bartlett | 1.50 | 1.00 |
| 2. Dutchess | 1.50 | 1.00 |
| 3. Keifer | 1.50 | 1.00 |
| 4. Any other variety | 1.50 | 1.00 |

CLASS G - PLUMS (Plate of 5)			
1. Bradshaw	1.50	1.00	
2. Lombard	1.50	1.00	
3. German Prune	1.50	1.00	
4. Any other variety	1.50	1.00	

CLASS H - QUINCES (Plate of 5)			
1. Any variety	1.50	1.00	

CLASS I - GRAPES (3 Bunches)			
1. Catawba - Red	1.50	1.00	
2. Concord - Blue	1.50	1.00	
3. Niagara - White	1.50	1.00	
4. Delaware - Red	1.50	1.00	
5. Fredonia - Blue	1.50	1.00	
6. Any other variety	1.50	1.00	

CLASS J - STRAWBERRIES (1/2 pint)			
1. Any variety	1.50	1.00	

**Department No. 16
BEES, HONEY & APARIAN PRODUCTS**

Judging Tuesday 9:00 a.m.

Entries close July 31st

JOE MERRILEES, SUPERINTENDENT
1488 SR 162, North Fairfield, Ohio 44855
Phone (419) 929-8890

Irene Merrilees, Asst. Superintendent
Phone (419) 929-8890

All exhibits must be in place by 8:00 A.M. Monday.
The superintendent will be present on Sunday 7:00 to 8.30 P.M. to receive exhibits.

Competition open to all counties open to Huron County.
Each exhibitor limited to one entry in each category.
All exhibits shown must be a product of exhibitor.

All Class A exhibits must be a product from exhibitor's own apiary.
Molded beeswax and all candles must be 100% beeswax with no additives.

Jars to be Queenline Glass or Classic Glass.
Extracting frames are to be wrapped in clear plastic or in show box.
In Class A, Entry 14, informational and decorative items other than apiary products may be in gift pack but all aparian products (honey, beeswax, etc.) must be product of own apiary. Apiary or exhibitor name on contents of gift pack are not allowed.

Observation Hives must have either a single or double pane with Plexiglas shield on outside. \$5.00 will be allowed to each exhibitor in Entry 15 not winning a premium.

Class B exhibits must be prepared by exhibitor but purchased honey may be used.

Class B exhibits must contain all honey sweetening. (No sugar, molasses, etc.) Place in ziploc bags. Recipe must accompany each exhibit.

Rosette awarded "Best of Show" Class A
Rosette awarded "Best of Show" Class B

Judges decision will be final.
All exhibits released 8:00 A.M. Sunday. Not responsible for articles after 9:00 A.M.

CLASS A			
1. Extracted Honey, White 3 - 1# jars	3.00	2.00	1.00
2. Extracted Honey, Light Amber 3 - 1# jars	3.00	2.00	1.00
3. Extracted Honey, Amber to Dark 3 - 1# jars .	3.00	2.00	1.00
4. Creamed Honey, 1 lb. jar	3.00	2.00	1.00
5. Chunk Honey, 1 lb. jar	3.00	2.00	1.00
6. Cut Comb Honey, 1 section in clear plastic container	3.00	2.00	1.00
7. Section Comb Honey in wooden square 1 section	3.00	2.00	1.00
8. Section Comb Honey in round plastic container, 1 section	3.00	2.00	1.00
9. Extracting Frame, 2 deep	3.00	2.00	1.00
10. Extracting Frame, 2 shallow	3.00	2.00	1.00
11. Beeswax, minimum 1 lb., 1 molded	3.00	2.00	1.00
12. Dipped Candle, 2 each	3.00	2.00	1.00
13. Molded Candle, 1 each	3.00	2.00	1.00
14. Honey Gift Package, Display in box or suitable container of Aparian products, total contents no less than 3 lbs. and			

no more than 10 lbs.	5.00	2.50	1.00
15. Closed Observation Hive with Bees	25.00	15.00	7.50
16. Pollen - 1 lb jar	3.00	2.00	1.00

CLASS B			
1. Honey Candy, 5 Pieces.	3.00	2.00	1.00
2. Honey Chocolate Chip Cookies, 5 Each	3.00	2.00	1.00
3. Any Other Honey Cookies, 5 Each	3.00	2.00	1.00
4. Honey Brownies, 5 each	3.00	2.00	1.00
5. Honey Yeast Bread, White 1/2 loaf	3.00	2.00	1.00
6. Honey Quick Bread, 1/2 loaf	3.00	2.00	1.00
7. Honey Cake, Unfrosted, 1/4	3.00	2.00	1.00
8. Honey Grain Cereal (Granola) 1 pt. Glass or Plastic Container	3.00	2.00	1.00
9. Any Other Honey Yeast Bread	3.00	2.00	1.00
10. Honey Pie, in 5" Tart Pan	3.00	2.00	1.00

**Department No. 17
FOODS**



Judging Monday 1:00 p.m. (Canning, Baking A-L)
Wednesday 1:00 p.m. (Baking Class M)
Thursday 11:00 a.m. (Nursing Home Special Judging)

Entries close July 31st

RACHEL BUURMA, SUPERINTENDENT
Phone (419) 935-0230
Betty Stein, Asst. Superintendent
Phone (419) 935-0363
Bernadine Stout, Asst. Superintendent
Phone (419) 935-5454
Laura Ott, Asst. Superintendent
Phone (419) 465-4627

ALL ENTRIES TO BE BROUGHT IN BETWEEN 8:00 AM AND 12 NOON MONDAY, CANNED GOODS ACCEPTED BETWEEN 2:00 PM AND 4:00 PM SUNDAY.

SILVER TRAY and Rosettes - Awarded for Best of Show in Canning, Baking and Decorated Cakes.

Best of Class Rosettes awarded in Class G, H, I, J, K, L, N, O, and P.
Competition open to all counties except those closed to Huron County.

Each exhibitor limited to one entry in each category. The same item may not be entered in multiple categories.

Only entries in which classes are listed will be accepted.
Baked goods must be brought in Ziploc bags. Twist ties will be not be accepted.

Any baked goods containing perishable ingredients (such as eggs, cream cheese, sour cream, meringue, and any other dairy ingredients) must be refrigerated or on ice until judging time.

The superintendents or members of the Huron County Fair Board will provide no refrigeration.

If baked goods are brought in coolers, exhibitor must be present during the judging to bring exhibit to table. Entry tags must be attached to ziploc bags. Recipe must be included and set inside ziploc bags.

Judging order of Baking Classes will be at the discretion of the judge.

Judges and superintendents shall have the right to open all jars.
All canning exhibits must be labeled as to variety.
Jars must be exhibited with two (2) piece lids and bands.
Only articles in specified sizes, jars and containers will be accepted.
No lid covers on jars.

Canning articles must be prepared, by the exhibitor, in the current calendar year. All canned goods must be labeled with month, day and year of processing.

All fruit, vegetables and pickles can be exhibited in pint or quart jars.
ALL ENTRIES RELEASED AT 8:00 AM SUNDAY.
SUPERINTENDENTS ARE NOT RESPONSIBLE FOR ENTRIES AFTER 11:00 AM.

**ALL CANNED MEATS, FRUITS AND VEGETABLES
WILL BE JUDGED BY APPEARANCE ONLY.**

Extension Food and Nutrition Specialists stress the importance of properly canned foods. Approved methods are the hot water bath and the pressure canner. Fruits (and pickled foods) may be processed by hot water bath. Vegetables and meats are to be pressure canned. For information on canning procedures contact the County Extension Office at (419) 668-8219, 180 Milan Avenue, Norwalk, Ohio 44857.

Entries should be in standard canning jars, with new standard lids. The entry should be accompanied with a statement specifying the method and processing time. Examples "20 minutes in a boiling water bath" or "30 minutes in a pressure canner at 10 pounds pressure." Entries must be labeled with product name, date of preparation, processing method, and processing time.

Don't miss the Special Premium Awards offered by Ball Corporation. Premiums will be mailed.

Jarden Home Brands proudly presents...

**Jarden Home Brands Preserving Award
2011 Adult Premium Food Preservation Award**

To promote the art of home canning, and to honor adults who excel in the art of home canning, Jarden Home Brands is offering First and Second Place Adult Award categories.

Judges will select the two best exhibits submitted by adults in Fruit, Vegetable, Pickle and Soft Spread categories canned in Ball Jars sealed with Ball Bands with Dome Lids or Ball Collection Elite Decorative Bands with Dome Lids, or canned in Kerr Jars sealed with Kerr Bands with Self-Sealing Lids or Ball Collection Elite Decorative Bands with Dome Lids. In addition, soft spreads entries will be limited to those prepared using one of the Ball Fruit Jell Pectins: Regular, No Sugar Needed; Liquid; with pectin proof of purchase provided at time of entry.

The entries designated First Place from each category will receive the following:

- Two (2) Five Dollar Coupons (\$5.00) for Jarden Home Brands Canning Products and one (1) Three Dollar Coupon (\$3.00) for Ball 100% Natural Products.

The entries designated Second Place from each category will receive the following:

- Two (2) Five Dollar Coupons (\$5.00) for Jarden Home Brands Canning Product

**Jarden Home Brands Fresh Preserving Award
2011 Youth Premium Food Preservation Award**

To promote the art of home canning, and to honor youths who excel in the art of home canning. Jarden Home Brands Canning is offering First and Second Place Youth Award categories.

Judges will select the best entry by a youth in Fruit, Vegetable, Pickle and Soft Spread categories canned in Ball Jars sealed with Ball Bands with Dome Lids or Ball Collection Elite Decorative Bands with Dome Lids, or canned in Kerr Jars sealed with Kerr Bands with Self-Sealing Lids or Ball Collection Elite Decorative Bands with Dome Lids. In addition, soft spreads entries will be limited to those prepared using one of the Ball Fruit Jell Pectins: Regular, No Sugar Needed; Liquid; with pectin proof of purchase provided at time of entry.

The best entry from each category will receive the following:

- Two (2) Five Dollar Coupons (\$5.00) for Ball or Kerr Home Canning Products

CLASS A - FRUITS

1. Blackberries	1.50	1.00
2. Red Raspberries	1.50	1.00
3. Strawberries	1.50	1.00
4. Peaches	1.50	1.00
5. Pears	1.50	1.00
6. Plums	1.50	1.00
7. Sour Cherries	1.50	1.00
8. White Cherries	1.50	1.00
9. Red Sweet Cherries	1.50	1.00
10. Apple Sauce	1.50	1.00
11. Grapes	1.50	1.00
12. Any other fruit	1.50	1.00
13. Fruit Juice	1.50	1.00

CLASS B - VEGETABLES

1. Peas	1.50	1.00
2. Tomatoes	1.50	1.00
3. Corn	1.50	1.00
4. Beets	1.50	1.00
5. Carrots	1.50	1.00
6. Spinach	1.50	1.00
7. Green Beans	1.50	1.00
8. Lima Beans	1.50	1.00
9. Combination of Vegetables	1.50	1.00
10. Any other vegetable	1.50	1.00
11. Vegetable Juice	1.50	1.00

CLASS C - PICKLES

1. Bean	1.50	1.00
2. Beet	1.50	1.00
3. Bread & Butter Cucumbers	1.50	1.00
4. Catsup	1.50	1.00
5. Chunk	1.50	1.00
6. Chili Sauce	1.50	1.00
7. Cucumber - Sweet	1.50	1.00
8. Cucumber - Dill	1.50	1.00
9. Mixed Chopped Pickle Relish	1.50	1.00
10. Mixed Whole Pickle	1.50	1.00
11. Peppers Pickled	1.50	1.00
12. Onion	1.50	1.00
13. Peach	1.50	1.00
14. Pear	1.50	1.00
15. Sweet Apple	1.50	1.00
16. Salsa	1.50	1.00
17. Any other relish	1.50	1.00
18. Any other pickle	1.50	1.00

CLASS D - MEATS (1 Quart jars)

1. Beef	1.50	1.00
2. Pork	1.50	1.00
3. Chicken	1.50	1.00
4. Mincedmeat	1.50	1.00
5. Soup	1.50	1.00
6. Any other meat	1.50	1.00

CLASS E - JELLIES - (1/2 pint jars)

1. Apple	1.50	1.00
2. Blackberry	1.50	1.00
3. Cherry	1.50	1.00
4. Currant	1.50	1.00
5. Grape	1.50	1.00
6. Plum	1.50	1.00
7. Any other jelly	1.50	1.00

**CLASS F - JAMS, BUTTERS AND MARMALADES
(1/2 pint jars)**

1. Blackberry Jam	1.50	1.00
2. Cherry Jam	1.50	1.00
3. Peach Jam	1.50	1.00
4. Raspberry Jam	1.50	1.00
5. Strawberry Jam	1.50	1.00
6. Any other jam	1.50	1.00
7. Apple Butter	1.50	1.00
8. Pear Butter	1.50	1.00
9. Orange Marmalade	1.50	1.00
10. Any other marmalade or butter	1.50	1.00

BAKING

Recipe must accompany each exhibit of baking. This includes frosting for cakes, meringues for pie and candy. (PLEASE PLACE ALL BAKED GOODS IN ZIPLOC BAGS. TWIST TIES WILL NOT BE ACCEPTED.)

CLASS G - BREAD (exhibit 1/2 loaf bread)

* Exhibits must come in cool

1. White Yeast Bread	2.25	1.00
2. Rye Yeast Bread	2.25	1.00
3. No Knead Yeast Bread	2.25	1.00
4. Whole Wheat Yeast Bread	2.25	1.00
5. French Bread	2.25	1.00
6. Christmas Bread (Whole Loaf)	2.25	1.00
7. Yeast Rolls (3)	2.00	1.00
8. Yeast Coffee Cake (1/2 Cake)	2.00	1.00
9. Raised Doughnuts (3)	2.00	1.00
10. Sweet Rolls (3)	2.00	1.00
11. Any Other Yeast Bread	2.00	1.00
12. Bread Machine Loaf	2.00	1.00

CLASS H - CAKE (Entries 11-15 may be on forms)

* Take home cakes after Monday judging. One slice left for display.

1. Angel Food Cake , unfrosted	3.00	1.50
2. Sponge Cake, unfrosted	3.00	1.50
3. Marble Cake, unfrosted	3.00	1.50
4. Spice Cake	3.00	1.50
5. Chiffon Cake, unfrosted	3.00	1.50
6. Chocolate Layer Cake, frosted	3.00	1.50
7. White Layer Cake, frosted	3.00	1.50
8. Yellow Layer Cake, frosted	3.00	1.50
9. Any Other Cake, frosted	3.00	1.50
10. Best Decorated Cupcake, Youth Only (Theme Winter Wonderland).....	3.00	1.50

11. Best Decorated Cake (Whole)	4.00	2.00
12. Best Cut-up Decorated Cake (Whole)	4.00	2.00
13. Doll Cake (Whole)	4.00	2.00
14. Wedding Cake (Whole)	5.00	2.00
15. Molded Cake (Whole - All Molds)	5.00	2.00
16. Any Other cake	3.00	1.50

CLASS I - PIE (Made in 4-6 inch tart pan)

No Cream Pies

1. Lemon	2.00	1.00
2. Pumpkin	2.00	1.00
3. Cherry	2.00	1.00
4. Apple	2.00	1.00
5. Berry	2.00	1.00
6. Mince	2.00	1.00
7. Pecan	2.00	1.00
8. Peach	2.00	1.00
9. Any other variety	2.00	1.00

CLASS J - COOKIES (3 each on small plate)

1. Sugar Cookies	1.50	1.00
2. Molasses Cookies	1.50	1.00
3. Drop Fruit Cookies	1.50	1.00
4. Filled Cookies	1.50	1.00
5. Oatmeal Cookies	1.50	1.00
6. Peanut Butter Cookies	1.50	1.00
7. Decorated Cookies	1.50	1.00
8. Chocolate Chip Cookies	1.50	1.00
9. Brownies	1.50	1.00
10. Any other cookies	1.50	1.00

CLASS K - CANDY (3 each on small plate)

1. Nut Fudge	1.50	1.00
2. Chocolate Fudge	1.50	1.00
3. Seafoam	1.50	1.00
4. Divinity	1.50	1.00
5. Maple	1.50	1.00
6. Peanut Butter	1.50	1.00
7. Any other candy	1.50	1.00

CLASS L - MAKE IT WITH MIXES

Use any packaged mix. Add other ingredients to create something new. Must include entire recipe.

1. Cakes (Whole Cake)	2.00	1.00
2. Cookies (3)	2.00	1.00
3. Quick Breads (1/2 loaf)	2.00	1.00
4. Brownies (3)	2.00	1.00
5. Any other not listed	2.00	1.00

CLASS M - NEW BREAD RECIPE - MUST MAKE ENTRY

Entries to be in place 12 Noon Wednesday. Judging Wednesday at 1:00 pm. Must follow recipe exactly as written, make no substitutions or additions. Must display whole loaf. Bread must come in cool.

Premiums	4.00	3.00	2.00	1.00
----------------	------	------	------	------

PINEAPPLE SWEET ROLLS

(Exhibit one dozen)

- 1 package (1/4 ounce) active dry yeast
- 1/4 cup warm water (110° to 115°)
- 1 tablespoon plus 1/4 cup sugar, divided
- 1 cup warm milk (110° to 115°)
- 5 to 5-1/2 cups all-purpose flour
- 2 eggs, beaten
- 1/2 cup butter, melted, divided
- 1 teaspoon salt

TOPPING:

- 1-1/2 teaspoons cornstarch
- 1 can (8 ounces) crushed pineapple, undrained

GLAZE:

- 1-1/2 cups confectioner's sugar
- 1 teaspoon vanilla extract
- 1 to 2 tablespoon milk

In a mixing bowl, dissolve yeast in warm water. Add 1 tablespoon sugar; let stand for 5 minutes. Add milk and 1-1/2 cups flour. Beat until smooth. Cover and let rise in a warm place until doubled, about 45 minutes. Add the eggs, 1/4 cup butter, salt, remaining sugar and enough remaining flour to form a soft dough. Turn onto a floured surface; knead until smooth and elastic, about 6-8 minutes. Place in a greased bowl, turning once to grease top. Cover and let rise until doubled, about 45 minutes. Punch dough down. Turn onto a floured surface; divide in half. Roll each into a 12-in. x 8 in. rectangle. Brush with some of the remaining butter. Roll up, jelly-roll style, starting with a long side. Pinch seam to seal. Cut each into 12 slices. Place, cut side down, 2 in. apart on greased baking sheets. Brush with remaining butter. Cover and let rise until doubled, about 30 minutes. Meanwhile, in a small saucepan, combine cornstarch and pineapple until blended. Bring to a boil over medium heat; cook and stir for 2 minutes. Remove from the heat. Place a teaspoonful of filling in the

center of each roll. Bake at 425° for 12-16 minutes or until golden brown. Remove from pans to wire racks. For glaze, combine sugar, vanilla and enough milk to achieve desired consistency. Drizzle over warm rolls. **Yield:** 2 dozen.

CLASS N - MEN ONLY

1. Cake	2.00	1.50
2. Cookies	2.00	1.50
3. Candy	2.00	1.50
4. Any Other	2.00	1.50

CLASS O - QUICK BREADS (1/2 loaf)

1. Pumpkin Bread	1.75	1.00
2. Corn Bread	1.75	1.00
3. Banana Bread	1.75	1.00
4. Date Bread	1.75	1.00
5. Any Other Fruit Bread	1.75	1.00
6. Muffins (3)	1.75	1.00
7. Bran Muffins (3)	1.75	1.00
8. Baking Powder Biscuits (3)	1.75	1.00
9. Coffee Cake (1/2)	1.75	1.00
10. Microwave Quick Bread	1.75	1.00
11. Any other quick bread	1.75	1.00

CLASS P - ALL ABOUT ZUCCHINI

1. Quick Bread 1/2 Loaf	2.00	1.50
2. Cookies (3)	2.00	1.50
3. Cake Whole	2.00	1.50
4. Muffins (3)	2.00	1.50
5. Brownies (3)	2.00	1.50
6. Any other (3)	2.00	1.50

CLASS Q - NURSING HOME SPECIAL

Thursday special for nursing homes.
Entries to be judged Thursday at 11:00 A.M.
Must be in place by 10:00 A.M.
Need not have exhibitor ticket or pre-registration.

**Department No. 18
CLOTHING & HOME FURNISHINGS**

Judging Monday 9:00 a.m.

Entries close July 31st

VIRGINIA LAWRENCE, CO-SUPERINTENDENT
CAROL ANDRES, CO-SUPERINTENDENT
1137 New State Rd., Norwalk, Ohio 44857
Phone (419) 668-6617

Assistant Superintendents:
Kaylee Lawrence
1136 New State Road, Norwalk, Ohio 44857
Cora Stoddard
Norwalk, Ohio 44857
Pat Scheid
Monroeville, Ohio 44847

Exhibits must be in place by 8:00 A.M. Monday.
Exhibits accepted Sunday from 10:00 A.M. to 7:00 P.M.
Pick up entry tickets in Secretary's office. **Secretary's office closes at 5 p.m. on Sunday, tickets must be picked up prior to that time.** It is suggested that tickets be picked up prior to Sunday and attached to entries when entered.
Exhibits will be released from 9:00 A.M. to 1:00 P.M. Sunday.
(Not responsible after 1:00 P.M.)

6 BEST OF SHOW AWARDS:
Only items completed by the exhibitor will be eligible for Best of Show

- Sewing
- Quilts & Quilting
- Afghans
- Needlework
- Knit & Crochet
- Miscellaneous Projects

2 BEST OF CLASS AWARDS:
Special Theme
Young Exhibitor

Judging will be Monday morning and afternoon.

RULES

Exhibitors limited to one entry under each item number.
No purchased article can compete for a premium.
Any article without competition will be awarded a prize only if the judge warrants it as worthy of a prize.

Soiled articles will not be displayed or judged.
 No premium will be awarded on an article improperly entered.
 All needlework will be judged with regard to beauty, perfection, amount of work and suitability for what it is intended.
 All entries (with the exception of Class AG Lots 18, 19 & 23) must be the work of the exhibitor.
 All exhibits must not have been entered in previous years.

- ATTENTION -

Class BB Young Exhibitor
 This class has been included to encourage the next generation of Huron County Fair exhibitors. Exhibitors up to age 16 are encouraged to enter in this class. Exhibitors age 16 and older are encouraged to enter in the other classes in Department 18. A special award for Best of Class will be awarded for this class.

Class BC Special Theme
 Enter one item of your choice (enterable in this department). The entries in this class will not be divided into categories. All items entered will compete within this class. Judging will be done with regard to quality of work, appearance, creativity and use of the theme. A special award for Best of Class will be awarded for this class.

**BEST OF SHOW SEWING
 CLASS AA-AF**

CLASS AA - CLOTHING FOR KIDS TO SIZE 6

1. Baby Hat or Bonnet	2.00	1.50
2. Apron	2.00	1.50
3. Dress	2.00	1.50
4. Playsuit	2.00	1.50
5. Girls Skirt	2.00	1.50
6. Girls Blouse or Top	2.00	1.50
7. Boys Shirt or Top	2.00	1.50
8. Pants or Slacks (girls or boys)	2.00	1.50
9. Jacket	2.00	1.50
10. Blazer	2.00	1.50
11. Sleepwear	2.00	1.50
12. Baptismal or Christening Gown	2.00	1.50
13. Shorts (girls or boys)	2.00	1.50
14. Vest (girls or boys)	2.00	1.50
15. Jumper	2.00	1.50
16. Costume	2.00	1.50
17. Smocked Item	2.00	1.50

CLASS AB - CLOTHING FOR KIDS SIZE 6 & UP

1. School Dress	2.00	1.50
2. Dress-up Dress	2.00	1.50
3. Skirt	2.00	1.50
4. Blouse or Top	2.00	1.50
5. Slacks (girls or boys)	2.00	1.50
6. Shorts (boys or girls)	2.00	1.50
7. Jacket (boys or girls)	2.00	1.50
8. Sleepwear	2.00	1.50
9. Sportswear	2.00	1.50
10. Boys Shirt or Top	2.00	1.50
11. Apron	2.00	1.50
12. Jumper	2.00	1.50
13. Vest	2.00	1.50
14. Costume	2.00	1.50
15. Girls First Communion Dress	2.00	1.50
16. Boys First Communion Outfit	2.00	1.50
17. Smocked Item	2.00	1.50

CLASS AC - ADULT CLOTHING

1. Street Dress	2.00	1.50
2. Dress-up Dress	2.00	1.50
3. Bridal Gown	4.00	2.00
4. Prom or Attendant's Dress	4.00	2.00
5. Blouse or Top	2.00	1.50
6. Skirt	2.00	1.50
7. Slacks (mens or womens)	2.00	1.50
8. Housecoat or robe	2.00	1.50
9. Women's sleepwear	2.00	1.50
10. Men's sleepwear	2.00	1.50
11. Apron	2.00	1.50
12. Woman's Suit	4.00	2.00
13. Men's Suit	4.00	2.00
14. Sports Jacket (men's)	2.00	1.50
15. Blazer (women's)	2.00	1.50
16. Men's Shirt or Top	2.00	1.50
17. Jacket or Coat	2.00	1.50
18. Vest (men's or women's)	2.00	1.50
19. Jumper	2.00	1.50
20. Skirt or Dress with split skirt	2.00	1.50
21. Shorts (men's or women's)	2.00	1.50
22. Costume (men's or women's)	2.00	1.50
23. Smocked Item	2.00	1.50

CLASS AD - SWEATSHIRTS

1. Applique Cardigan	2.00	1.50
2. Cutwork Cardigan	2.00	1.50
3. Counted Cross Stitch Cardigan	2.00	1.50
4. Embroidered Cardigan	2.00	1.50
5. Machine Embroidered Cardigan	2.00	1.50
6. Applique Pullover	2.00	1.50
7. Cutwork Pullover	2.00	1.50
8. Counted Cross Stitch Pullover	2.00	1.50
9. Embroidered Pullover	2.00	1.50
10. Machine Embroidered Pullover	2.00	1.50
11. Any Other Cardigan	2.00	1.50
12. Any Other Pullover	2.00	1.50

CLASS AE - NEW GARMENTS FROM USED MATERIAL

1. Coat	3.00	2.00
2. Dress	2.00	1.50
3. Jacket or Blazer	3.00	2.00
4. Doll Clothes (3 outfits)	2.00	1.50
5. Suit	4.00	2.00
6. Vest	2.00	1.50
7. Child's Clothing	2.00	1.50
8. Accessory	1.50	1.00

CLASS AF - SEWN ACCESSORIES

1. Purses, totes, bags	2.00	1.50
2. Scarves, shawls, neckties	2.00	1.50
3. Hats	2.00	1.50
4. Belts, Cumberbuns	2.00	1.50
5. Any not listed and not enterable elsewhere in this department	2.00	1.50

**BEST OF SHOW QUILTS & QUILTING
 CLASS AG**

CLASS AG - QUILTS

1. Patchwork by hand	5.00	3.00
2. Patchwork by machine	5.00	3.00
3. Applique by machine	5.00	3.00
4. Applique by hand	5.00	3.00
5. Quilted by hand	5.00	3.00
6. Quilted by machine	5.00	3.00
7. Embroidered by hand	5.00	3.00
8. Embroidered by machine	5.00	3.00
9. Original Design Quilt	5.00	3.00
10. Original Design Comforter	5.00	3.00
11. Comforter (tied)	5.00	3.00
12. Baby Comforter (tied)	3.00	2.00
13. Baby Quilted by hand	3.00	2.00
14. Baby Quilted by machine	3.00	2.00
15. Quilt Top - embroidered	3.00	2.00
16. Quilt Top - pieced	3.00	2.00
17. Quilt Top - applique	3.00	2.00
18. Antique Quilt Top	3.00	2.00
19. Antique Quilt	3.00	2.00
20. Rag Quilt	3.00	2.00
21. Appliqued Clothing	3.00	2.00
22. Quilted Table Runner	5.00	3.00
23. Antique Crazy Quilt	5.00	3.00
24. Hand Quilted Wall Hanging (Not bed sized)	3.00	2.00
25. Machine Quilted Wall Hanging (Not bed sized)	3.00	2.00
26. Hand Appliqued Pillow	3.00	2.00
27. Machine Appliqued Pillow	3.00	2.00
28. Hand Quilted Pillow	3.00	2.00
29. Machine Quilted Pillow	3.00	3.00
30. Hand Quilted Potholders (2)	3.00	2.00
31. Machine Quilted Potholders (2)	3.00	2.00
32. Hand Pieced Potholders (2)	3.00	2.00
33. Machine Pieced Potholders (2)	3.00	2.00
34. Pieced By More Than 1 Person (Group or Club)	3.00	2.00
35. Quilted By More Than 1 Person (Group or Club)	3.00	2.00
36. Baby Quilt (pieced by hand)	3.00	2.00
37. Baby Quilt (pieced by machine)	3.00	2.00

**BEST OF SHOW AFGHANS & BEDSPREADS
CLASS AH, AI, & AJ**

CLASS AH - CROCHETED AFGHANS

1. Ripple	5.00	3.00
2. Shell	5.00	3.00
3. Afghan Stitch	5.00	3.00
4. Granny Square	5.00	3.00
5. Embroidered	5.00	3.00
6. Navajo	5.00	3.00
7. Done in Strips	5.00	3.00
8. Woven Pattern	5.00	3.00
9. Squares (not granny)	5.00	3.00
10. Sampler	5.00	3.00
11. Cable	5.00	3.00
12. From Scraps	5.00	3.00
13. Crochet in Pattern (not embroidered).....	5.00	3.00
14. Filigree	5.00	3.00
15. Using 2+ Strands of Yarn	5.00	3.00
16. Any Not Listed	5.00	3.00
17. Baby Ripple	5.00	3.00
18. Baby Shell	5.00	3.00
19. Baby Afghan Stitch	5.00	3.00
20. Baby Granny Squares.....	5.00	3.00
21. Baby Sampler	5.00	3.00
22. Baby From Scraps	5.00	3.00
23. Any Other Baby	5.00	3.00

CLASS AI - KNIT AFGHANS

All afghans are hand knit unless otherwise noted as machine knit.

1. Cable	5.00	3.00
2. Ripple	5.00	3.00
3. Fisherman	5.00	3.00
4. Using 2+ strands	5.00	3.00
5. Original Design.....	3.00	2.00
6. Sampler	5.00	3.00
7. Done in Strips.....	5.00	3.00
8. Woven Pattern	5.00	3.00
9. Done in Squares	5.00	3.00
10. Any other hand knit	5.00	3.00
11. Any machine knit	5.00	3.00
12. Baby Cable	5.00	3.00
13. Baby Ripple	5.00	3.00
14. Baby Fisherman	5.00	3.00
15. Baby Sampler	5.00	3.00
16. Any other Baby	5.00	3.00

CLASS AJ - BEDSPREADS

1. Crocheted	5.00	3.00
2. Knit	5.00	3.00
3. Embroidered	5.00	3.00
4. Any not listed	5.00	3.00

**BEST OF SHOW NEEDLEWORK
CLASS AK-AU**

CLASS AK - TABLECLOTHS

1. Crocheted	2.00	1.50
2. Crocheted Edge	2.00	1.50
3. Knit	2.00	1.50
4. Knit Edge	2.00	1.50
5. Cross Stitch (counted)	2.00	1.50
6. Embroidered (includes stamped X-Stitch)	2.00	1.50
7. Placemats (4)	2.00	1.50
8. Embroidered Table Runner	2.00	1.50
9. Counted Cross Stitch Table Runner	2.00	1.50

CLASS AL - EMBROIDERED ITEMS

(No counted cross in this section)

1. Luncheon Set	2.00	1.50
2. Pillowcases (pair)	2.00	1.50
3. Baby Item	2.00	1.50
4. Filled Pillow	2.00	1.50
5. Child s Item	2.00	1.50
6. Adult Item	2.00	1.50
7. Holiday Item	2.00	1.50
8. Any not listed	2.00	1.50

CLASS AM - MACHINE EMBROIDERY

1. Luncheon Set	2.00	1.50
2. Pillow Cases (pair)	2.00	1.50
3. Filled Pillow	2.00	1.50
4. Baby Item	2.00	1.50
5. Adult Item	2.00	1.50
6. Holiday Item	2.00	1.50
7. Child s Item	2.00	1.50
8. Any not listed	2.00	1.50

CLASS AN - CROSS STITCH

(No counted cross in this section)

1. Luncheon Set	2.00	1.50
2. Pillowcases (pair)	2.00	1.50
3. Filled Pillow	2.00	1.50
4. Baby Item	2.00	1.50
5. Adult Item	2.00	1.50
6. Holiday Item	2.00	1.50
7. Child s Item	2.00	1.50
8. Any not listed	2.00	1.50

CLASS AO - CREWEL EMBROIDERY

1. Filled Pillow	2.00	1.50
2. Holiday Item	2.00	1.50
3. Purse	2.00	1.50
4. Any not listed	2.00	1.50

CLASS AP - NEEDLEPOINT

1. Chair seat / footstool	2.00	1.50
2. Small petit point article	2.00	1.50
3. Bargello pillow	2.00	1.50
4. Holiday item	2.00	1.50
5. Filled pillow	2.00	1.50
6. Any not listed	2.00	1.50

CLASS AQ - PLASTIC CANVAS NEEDLEPOINT

1. Toy	2.00	1.50
2. Christmas Item	2.00	1.50
3. Household Item	2.00	1.50
4. Valentines Item	2.00	1.50
5. Easter Item	2.00	1.50
6. Door or Wall Decoration	2.00	1.50
7. Set of 4 Bookmarks	2.00	1.50
8. Clocks/Music Boxes	2.00	1.50
9. Any not listed	2.00	1.50
10. Tissue Box Cover	2.00	1.50

CLASS AR - FRAMED PICTURES (No counted cross stitch)

1. Plastic Canvas	3.00	2.00
2. Sampler	3.00	2.00
3. Needlepoint - Original Design	3.00	2.00
4. Needlepoint - Stamped	3.00	2.00
5. Needlepoint - Charted	3.00	2.00
6. Crewel 15" or smaller	3.00	2.00
7. Crewel 16" and over	3.00	2.00
8. Stamped Cross Stitch 15" or smaller	3.00	2.00
9. Stamped Cross Stitch 16" and over	3.00	2.00
10. Embroidered 15" or smaller	3.00	2.00
11. Embroidered 16" and over	3.00	2.00
12. Petit Point	3.00	2.00
13. Bargello	3.00	2.00
14. Any other not listed	3.00	2.00

CLASS AS - COUNTED CROSS STITCH

Dimensions given are for area of needlework.

1. Baby Item (No picture)	3.00	2.00
2. Child s clothing	3.00	2.00
3. Adult Clothing	3.00	2.00
4. Filled Pillow	3.00	2.00
5. Table Runner	3.00	2.00
6. Adult Apron	3.00	2.00
7. Child s Apron	3.00	2.00
8. Afghan	3.00	2.00
9. Unframed wallhanging up to 14 count under 15"	3.00	2.00
10. Unframed wallhanging 15 to 18 count under 15"	3.00	2.00
11. Unframed wallhanging on linen under 15"	3.00	2.00
12. Unframed wallhanging 25 count and up under 15"	3.00	2.00
13. Unframed wallhanging up to 14 count 15" and over	3.00	2.00
14. Unframed wallhanging 15 to 18 count 15" and over	3.00	2.00
15. Unframed wallhanging on linen 15" and over	3.00	2.00
16. Unframed wallhanging 25 count and up 15" and over	3.00	2.00
17. Framed picture up to 14 count under 15"	3.00	2.00
18. Framed picture 15 to 18 count under 15"	3.00	2.00
19. Framed picture on linen under 15"	3.00	2.00

20. Framed picture 25 count and up under 15".....	3.00	2.00
21. Framed picture up to 14 count 15" and over	3.00	2.00
22. Framed picture 15 to 18 count 15" and over	3.00	2.00
23. Framed picture on linen 15" and over	3.00	2.00
24. Framed picture 25 count and up 15" and over	3.00	2.00
25. Best companion grouping of 2 or more in individual frames	3.00	2.00
26. Best companion grouping of 2 or more in one frame	3.00	2.00
27. Neatest work (Must have back of piece exposed)	3.00	2.00
28. Original Design (Must be exhibitors own design)	3.00	2.00
29. Holiday Item (Exhibitors Choice)	3.00	2.00
30. Towels	2.50	1.50
31. Filled Pillow	2.50	1.50
32. Unframed Wall Hanging, under 11 count Under 15".....	3.00	2.00
33. Unframed Wall Hanging, under 11 count Over 15".....	3.00	2.00
34. Framed Picture, under 11 count Under 15".....	3.00	2.00
35. Framed Picture, under 11 count Over 15".....	3.00	2.00

**CLASS AT - FINISHED UNFRAMED WALLHANGINGS
(Wall Hangings Not Meant To Be Framed)**

1. Crewel over 24"	3.00	2.00
2. Crewel 24" and under	3.00	2.00
3. Embroidered over 24"	3.00	2.00
4. Embroidered 24" and under	3.00	2.00
5. Appliqued over 24".....	3.00	2.00
6. Appliqued 24" and under	3.00	2.00
7. Latch Hooked over 24"	3.00	2.00
8. Latch Hooked 24" and under	3.00	2.00
9. Hooked over 24".....	3.00	2.00
10. Hooked 24" and under	3.00	2.00

CLASS AU - MISCELLANEOUS NEEDLEWORK

1. Candlewick Item	2.00	1.50
2. Huck Toweling	2.00	1.50
3. Punch Work	2.00	1.50
4. Applique Pillow	2.00	1.50
5. Cutwork	2.00	1.50
6. Hand Quilted	2.00	1.50
7. Machine Quilted	2.00	1.50
8. Patchwork Potholders	2.00	1.50
9. Duplicate Stitch	2.00	1.50
10. Black Work	2.00	1.50
11. Ribbon Embroidery	2.00	1.50
12. Brazilian Embroidery	2.00	1.50
13. Pulled Thread	2.00	1.50
14. Any not listed	2.00	1.50

**BEST OF SHOW SMALL KNIT & CROCHET PROJECTS
CLASS AV - AW**

CLASS AV - HAND KNIT ITEMS

1. Baby Set (Jacket and cap or booties)	2.00	1.50
2. Booties	2.00	1.50
3. Child's Dress	2.00	1.50
4. Child's Pullover Sweater	2.00	1.50
5. Child's Cardigan Sweater	2.00	1.50
6. Adult's Pullover Sweater	2.00	1.50
7. Adult's Cardigan Sweater	2.00	1.50
8. Vest	2.00	1.50
9. Hat	2.00	1.50
10. Gloves or Mittens	2.00	1.50
11. Slippers	2.00	1.50
12. Socks	2.00	1.50
13. Filled Pillow	2.00	1.50
14. Collar	2.00	1.50
15. Doily	2.00	1.50
16. Jacket	2.00	1.50
17. Pot Holders (2 decorative)	2.00	1.50
18. Pot Holders (2 practical)	2.00	1.50

19. Dishrags (2 examples)	2.00	1.50
20. Scarf	2.00	1.50
21. Shawl	2.00	1.50
22. Any other not listed above	2.00	1.50

CLASS AW - CROCHET ITEMS

1. Baby Set (Jacket with hat or booties)	2.00	1.50
2. Booties	2.00	1.50
3. Jacket	2.00	1.50
4. Child's Dress	2.00	1.50
5. Child's Pullover Sweater	2.00	1.50
6. Child's Cardigan Sweater	2.00	1.50
7. Adult's Pull-Over Sweater	2.00	1.50
8. Adult's Cardigan Sweater	2.00	1.50
9. Vest	2.00	1.50
10. Doily, white	2.00	1.50
11. Doily, colored	2.00	1.50
12. Edged Pillowcases (pair)	2.00	1.50
13. Filled Pillow	2.00	1.50
14. Hat	2.00	1.50
15. Slippers	2.00	1.50
16. Socks	2.00	1.50
17. Pot Holders (2 decorative)	2.00	1.50
18. Pot Holders (2 practical)	2.00	1.50
19. Dishrags (2 examples)	2.00	1.50
20. Collar	2.00	1.50
21. Scarf	2.00	1.50
22. Shawl	2.00	1.50
23. Any not listed	2.00	1.50

**BEST OF SHOW MISCELLANEOUS PROJECTS
CLASS AX - AZ**

CLASS AX - TOYS

1. Stuffed Group (3)	2.00	1.50
2. Stuffed Single Animal	2.00	1.50
3. Stuffed Dressed Doll	2.00	1.50
4. Best Dressed Doll	2.00	1.50
5. Doll Clothes for 12" or smaller doll (2 outfits)	2.00	1.50
6. Doll Clothes for over 12" doll (2 outfits)	2.00	1.50
7. Game or Educational Toy	2.00	1.50
8. Any not listed	2.00	1.50

CLASS AY - RUGS

1. Braided Wool	2.50	1.50
2. Braided Cotton	2.50	1.50
3. Hooked	2.50	1.50
4. Latch Hook	2.50	1.50
5. Crocheted	2.50	1.50
6. Woven	2.50	1.50
7. Any not listed	2.50	1.50

CLASS AZ - CHRISTMAS ITEMS

1. Tree Skirt - Sewn	2.00	1.50
2. Tree Skirt - Quilted	2.00	1.50
3. Tree Skirt - Needlework	2.00	1.50
4. Tree Skirt - Knit or Crocheted	2.00	1.50
5. Needlepoint Stocking	2.00	1.50
6. Felt Stocking	2.00	1.50
7. Crochet Stocking	2.00	1.50
8. Knit Stocking	2.00	1.50
9. Counted Cross Stitch Stocking	2.00	1.50
10. Needlework Stocking	2.00	1.50
11. Family Group of Stockings (at least 3)	2.00	1.50
12. Tree Ornaments - Needlework (3)	2.00	1.50
13. Tree Ornaments - Stuffed (3)	2.00	1.50
14. Tree Ornaments - Counted Cross Stitch (3)	2.00	1.50
15. Tree Ornaments - Quilted (3)	2.00	1.50
16. Quilted Stocking	2.00	1.50
17. Plastic Canvas Ornaments	2.00	1.50
18. Any other Christmas item not listed	2.00	1.50

**BEST OF CLASS YOUNG EXHIBITORS
CLASS BA**

CLASS BA - YOUNG EXHIBITORS

1. Sewn Clothing	2.00	1.50
2. Knitting	2.00	1.50

3. Crocheting	2.00	1.50
4. Quilting	2.00	1.50
5. Counted Cross Stitch	2.00	1.50
6. Embroidery	2.00	1.50
7. Toys	2.00	1.50
8. Holiday Item	2.00	1.50
9. Latch Hook	2.00	1.50

CLASS BB - SPECIAL THEME

1. "Autumn in the Country"	3.00	2.00
----------------------------------	------	------

**Department No. 19
FLORICULTURE**

Entries close July 31st

General Theme
Salute to Service Organizations

Oral Judging Monday and Wednesday.
10:00 A.M. Monday for Specimens and Plants.

10:00 A.M. Wednesday for Arrangements and Wreaths.

KAREN HART, SUPERINTENDENT
65 White Ave., New London, OH 44851
(419)929-1085

Rose Perry, Asst. Superintendent
Susan Barnett, Asst. Superintendent
Barb Roberts, Asst. Superintendent
Donna Sisson, Asst. Superintendent
Barb Whyde, Asst. Superintendent

Superintendents not responsible for lost or broken items
nor watering plants and arrangements.

Monday - All entries of classes A thru P **MUST** be in place between
8:00-9:30 A.M. Oral Judging at 10:00 A.M.

Wednesday - Entries of classes Q thru S **MUST** be in place between
8:00-9:30 A.M. Oral Judging at 10:00 A.M.

Flower show coordinated & supervised by the
Huron County Master Gardeners Inc.

READ RULES AND REGULATIONS CAREFULLY!

1. Exhibitor must grow all specimens and plants.
2. Variety names are to be listed on entry tags or marked unknown.
ONLY EXHIBITS WITH CORRECT VARIETY NAMES ARE ELIGIBLE FOR BEST OF SHOW.
3. "Any other varieties" entries must be labeled with the common name and the variety name.
4. **More than one entry per class is allowed provided each entry is a different variety and labeled accordingly.**
5. Appropriately sized clear containers must be furnished by the exhibitor.
6. Wedges of wood, Styrofoam or other material should be used to keep blooms standing erect in the container.
7. Healthy attached leaves above the water line add points to the exhibit.
8. **ALL SINGLE BLOOM ENTRIES MUST BE DISBUDDED.**
9. Entry Tags must be securely **TIED** to the specimen container.
10. No artificial plant material may be used.
11. "Collections" must be individually displayed and grouped in a common container, i.e. sturdy basket, wooden box, tin, etc.
12. Any award may be withheld at the discretion of the judge.
13. Specimens past their prime or those not entered in the appropriate class will be removed from competition.
14. Junior entries are open to youth ages 8 to 16. The age of the youth **MUST** be on the entry tag.
15. Specimens and arrangements **MUST** be removed Sunday between 8:00 A.M. and noon. **Removal before that time will forfeit premiums.** Items not removed by noon will be discarded.

Definitions

DISBUDDED - Tiny side bud sare rubbed off or cut off close to the stem. These should be removed early to avoid stubs or scars.

ROUND FORM - Petals show depth and fullness. The disc should be round and well centered and prominent. Must be disbudded. i.e. carnations, asters, poppies.

SCAPE - a leafless stem that arises from the ground, usually bearing a

flower or flowers and possibly scales or bracts, i.e. Hemerocallis (Daylillies).

SPRAY - A single main stem with blooms or florets borne on lateral branches led by a terminal bloom which blossoms first. i.e. Columbine, Ageratum, Astilbe.

SPIKE - Single stalks in which the bottom florets usually blossom first. The spike should be erect and the stem sturdy with the flowers uniformly sized and spaced. i.e. Delphinium, Snapdragon, Foxglove.

VARIETY NAME - a subdivision of a species, i.e. Dianthus, variety names include Brilliant Star, Firewitch, Tiny Rubies, etc.

SPECIMEN FLOWERS - Monday

CLASS A - HYBRID TEA ROSES

1. One Bloom, Foliage Attached, Must Be Disbudded	2.50	2.00	1.50
--	------	------	------

CLASS B - POLYANTHA OR FLORIBUNDA ROSES

2. One Spray, Foliage Attached, NOT Disbudded	2.50	2.00	1.50
--	------	------	------

CLASS C - ENGLISH ROSES / OLD FASHION

3. One Spray, Foliage Attached, NOT Disbudded	2.50	2.00	1.50
--	------	------	------

CLASS D - GRANDIFLORA ROSES

4. One Disbudded Bloom, Foliage Attached, or One Spray NOT Disbudded, Foliage Attached	2.50	2.00	1.50
--	------	------	------

CLASS E - MINIATURE ROSES

5. One Spray	2.50	2.00	1.50
6. One Bloom	2.50	2.00	1.50

CLASS F - KNOCK-OUT ROSES - ANY COLOR

7. Single Knock-Out	2.50	2.00	1.50
8. Double Knock-Out	2.50	2.00	1.50

CLASS G - FULL BLOWN

9. Center Showing	2.50	2.00	1.50
-------------------------	------	------	------

CLASS H - ROSE, ANY OTHER

10. One Bloom or Spray variety named	2.50	2.00	1.50
--	------	------	------

**ROSETTE & CASH PRIZE OF \$5.00 AWARDED "BEST OF SHOW"
FROM CLASSES A THRU H. MUST HAVE VARIETY NAME.**

CLASS I - ANNUALS

1. Angelonia (1 spike)	2.50	2.00	1.50
2. Cockscomb, Celosia Crested (1 stem)	2.50	2.00	1.50
3. Cockscomb, Celosia Plumed (1 stem, no side stems)	2.50	2.00	1.50
4. Coleus (1 stem, foliage only)	2.50	2.00	1.50
5. Cosmos (1 spray)	2.50	2.00	1.50
6. Geranium (w/foliage attached).....	2.50	2.00	1.50
7. Marigold, large (1 bloom 2" or more)	2.50	2.00	1.50
8. Marigold, petite (1 spray)	2.50	2.00	1.50
9. Marigold, small (1 bloom less than 2")	2.50	2.00	1.50
10. Petunias - single (1 spray)	2.50	2.00	1.50
11. Petunias - double (1 spray)	2.50	2.00	1.50
12. Salvia (1 spike)	2.50	2.00	1.50
13. Snapdragons (1 spike)	2.50	2.00	1.50
14. Zinnias - bedding (1 spray)	2.50	2.00	1.50
15. Zinnias - (other) (1 bloom disbudded)	2.50	2.00	1.50
16. Sunflower, Helianthus (see rule #7) (1 bloom under 4")	2.50	2.00	1.50
17. Sunflower, Helianthus (see rule #7) (1 bloom 4-8")	2.50	2.00	1.50
18. Other flowering annual round form variety named.....	2.50	2.00	1.50
19. Other flowering annual spike form variety named.....	2.50	2.00	1.50
20. Other flowering annual spray form variety named.....	2.50	2.00	1.50

CLASS J - PERENNIALS

1. Chrysanthemum (1 spray)	2.50	2.00	1.50
2. Coralbells (1 stalk)	2.50	2.00	1.50
3. Coreopsis (1 spray)	2.50	2.00	1.50
4. Daisy - (1 bloom)	2.50	2.00	1.50
5. Daylily, Hemerocallis (1 scape)	2.50	2.00	1.50
6. Echinacea, Purple Coneflower (1 bloom)	2.50	2.00	1.50
7. Echinacea, any other variety named (1 bloom)	2.50	2.00	1.50
8. Gaillardia (1 bloom)	2.50	2.00	1.50
9. Sedum, Tall (1 stem)	2.50	2.00	1.50
10. Phlox (1 stem)	2.50	2.00	1.50
11. Rudbeckia (Old Fashioned Black-eyed Susan) (1 bloom)	2.50	2.00	1.50
12. Rudbeckia - Any other variety named (1 bloom)	2.50	2.00	1.50
13. Other flowering perennial round form Variety named	2.50	2.00	1.50
14. Other flowering perennial spike form Variety name listed	2.50	2.00	1.50
15. Other flowering perennial spray form Variety name listed	2.50	2.00	1.50

CLASS K - BULBS, TUBERS, RHIZOMES, Corms

1. Caladium (1 leaf)	2.50	2.00	1.50
2. Dahlia, 1 variety, 1 bloom (less than 4" with foliage attached)	2.50	2.00	1.50
3. Dahlia, 1 bloom (4-6" with foliage attached)	2.50	2.00	1.50
4. Lily, any variety, 1 stem	2.50	2.00	1.50
5. Other Bulbs etc. Variety named	2.50	2.00	1.50

CLASS L - HERBS

Individually displayed and grouped in a common container.
Label each specimen.

1. Collection of 5 different herbs Varieties named	4.00	3.00	2.00
2. Collection of Perennial Herbs (i.e. sages) 5 Varieties of the Same Species	4.00	3.00	2.00
3. Collection of Annual Herbs (i.e. basil) 5 Varieties of the Same Species	4.00	3.00	2.00

CLASS M - GLADIOLUS

1. White, Green, Yellow	2.50	2.00	1.50
2. Pink, Red, Rose	2.50	2.00	1.50
3. Orange / Salmon	2.50	2.00	1.50
4. Violet (Lavender)	2.50	2.00	1.50
5. Smokies, Tan, Brown	2.50	2.00	1.50

ROSETTE & CASH PRIZE OF \$5.00 AWARDED "BEST OF SHOW" FROM CLASSES I THRU M. MUST INCLUDE VARIETY NAME.

CLASS N - SPECIAL CLASS

1. One branch of a Flowering Shrub, in bloom, not to exceed 24 inches Each Specimen must be named.....	4.00	3.00	2.00
---	------	------	------

CLASS O - HOUSE PLANTS

Plant diameter not to exceed 24".

Must be in exhibitors possession 90 days.

1. Foliage Plant, 1 variety per pot	4.00	3.00	2.00
2. Blooming Plant, 1 variety per pot	4.00	3.00	2.00
3. Unusual Houseplant.....	4.00	3.00	2.00
4. African Violet, single bloom, one plant per pot	4.00	3.00	2.00
5. African Violet, double bloom, one plant per pot	4.00	3.00	2.00
6. Cacti, one variety per pot.....	4.00	3.00	2.00
7. Succulent, one variety per pot.....	4.00	3.00	2.00
8. Dish Garden - Not to exceed 12" overall (This is a group of 3 or more varieties of houseplants in an open container, judged for their artistic landscape affect.) 3 or more varieties of plants.....	4.00	3.00	2.00

CLASS P - PATIO CONTAINERS

Plant materials not to exceed an overall width of 24"

1. A planted real shoe or boot	4.00	3.00	2.00
2. Herbal Patio Planter	4.00	3.00	2.00
3. Planted Strawberry Jar.....	4.00	3.00	2.00
4. Annuals	4.00	3.00	2.00
5. Unusual Planted Patio Display Must have interpretation printed on a card Not to Exceed 24" Diameter.....	4.00	3.00	2.00

ROSETTE & CASH PRIZE OF \$5.00 AWARDED TO "BEST OF SHOW" IN CLASS O & P.

CLASS Q - JUNIOR HORTICULTURE

Ages 8-16. Age must be printed on tag.

1. Any Annual Named.....	3.00	2.00	1.00
2. Any Perennial Named	2.50	2.00	1.50
3. Any Houseplants	3.00	2.00	1.00

Wednesday

**Theme: "Salute to Service Organizations"
Artistic Design Rules**

(For information on arrangements go to www.oagc.org)

1. All arrangements must be the work of the exhibitor.
2. Exhibitors may enter multiple classes but only one entry per number.
3. To qualify for first place & Best of Show a PRINTED card listing plant material used AND your interpretation of your design must be placed near your arrangement.
4. Only garden grown materials may be used unless otherwise specified.
5. Painted or artificially colored fresh plant material is not permitted.
6. Bleached, treated (glycerinated, etc.) and dried material may be used.
7. Exhibitors may place their own design, but may NOT move or touch another exhibitor's design.
8. Show superintendents reserve the right to move designs if necessary for appropriate spacing of arrangements.
9. DO NOT ATTACH TAGS TO ARRANGEMENTS. PLACE THEM ON THE TABLE NEXT TO YOUR DESIGN.

Line Design - Mass Design- Perennial Manner Descriptions.

CLASS R - ARTISTIC DESIGN

Not to exceed 24" overall unless specified.

1. Salvation Army Small arrangement (More than 5" but less than 12" in every dimension).....	4.00	3.00	2.00
2. Boy Scouts Blue and Gold.....	4.00	3.00	2.00
3. Friends of the Library Featuring a teapot.....	4.00	3.00	2.00
4. Kiwanis Mass design	4.00	3.00	2.00
5. 4-H Featuring grasses and greens	4.00	3.00	2.00
6. Habitat For Humanity Centerpiece featuring wood.....	4.00	3.00	2.00
7. Services For Aging - FLORIST FLOWERS ALLOWED In the Oriental manner.....	4.00	3.00	2.00
8. VFW - FLORIST FLOWERS ALLOWED Featuring Patriotic colors.....	4.00	3.00	2.00
9. Master Gardeners Line design.....	4.00	3.00	2.00
10. Girl Scouts Featuring a cookie container.....	4.00	3.00	2.00
11. Junior Design (Ages 8-16) Your Interpretation of "Salute to Service Organizations"	4.00	3.00	2.00

CLASS S - WREATHS, WALL OR DOOR HANGERS

Must be ready to hang. Not to exceed 24"

Any base, ribbons & accessories allowed, no artificial plant material.

1. Rotary (Live plant material)	4.00	3.00	2.00
2. Salute to Service Organizations, your interpretation (dried or live).....	4.00	3.00	2.00

ROSETTE & CASH PRIZE OF \$5.00 AWARDED "BEST OF SHOW" FROM CLASSES R AND S.

**Department No. 20
HOBBY**

Entries close July 31st

ESTHER McCLISH, SUPERINTENDENT
2092 Mill Rd., North Fairfield, OH 44855
Phone (419) 744-2380

Norma McClish, Asst. Superintendent

All prize money is 1st place \$3.50, 2nd place \$2.50, 3rd place \$1.25, 4th place \$1.00

Open to all counties except those closed to Huron County.

Exhibits must be in place by 6:00 P.M. Sunday.

Exhibits received between 1:00 and 6:00 P.M. Sunday.

Late items displayed but not judged.

All exhibits must be work of the exhibitor and not entered in previous years.

One entry per person per Lot Number.

Exhibits released between 9:00 A.M. to Noon Sunday. Must have tag stub to claim items.

Any entry without competition will be awarded a prize only if in the opinion of the judge the entry is worthy of a prize.

Suggestion pick up tags early and attach before bringing Sunday. Attach with string or tape.

Best of Class winners may not repeat in consecutive years.

CLASS A - ART DRAWING

Best of Class Rosette will be Awarded

**Must be Mounted on Stiff Background (like Foamcore) or Framed
Artwork must be done by Exhibitor - Maximum height 26"**

1. Oil Painting - Portrait
2. Oil Painting - Landscape or Seascape
3. Oil Painting - Animal
4. Oil Painting - Flowers or Fruit
5. Oil Painting - Still Life
6. Oil Painting - Other
7. Acrylic - Portrait
8. Acrylic - Landscape or Seascape
9. Acrylic - Animal
10. Acrylic - Flowers or Fruit
11. Acrylic - Still Life
12. Acrylic - Other
13. Watercolor - Landscape or Seascape
14. Watercolor - Flowers or Fruit
15. Watercolor - Other
16. Charcoal and/or Chalk - Any Subject
17. Pencil and/or Ink - Any Subject
18. Beautiful Ohio - Any Medium
19. Huron County Fair - Any Medium

CLASS B - CRAFTS

**Best of Class Rosette will be Awarded for Lots 1-27 and 28-51
Item must be made by exhibitor.**

1. Wall Decoration - Christmas
2. Wall Decoration - Holiday No Christmas
3. Wall Decoration - No Holiday
4. Table Decoration - Christmas
5. Table Decoration - Holiday - No Christmas
6. Table Decoration - No Holiday
7. Wreath Christmas
8. Wreath Holiday No Christmas
9. Wreath No Holiday
10. Ornaments Painted (Set of 3)
11. Ornaments Other (Set of 3)
12. Silk Flowers Centerpieces
13. Silk Flowers Other
14. Weaving Any Type, Any Medium
15. Jewelry Making, Any Type, Any Medium
16. Poetry Written by Exhibitor
17. Paper Stamping, Making, Etc.
18. Stenciling
19. Decoupage
20. Reverse Glass Painting
21. Design on Shirt Painted
22. Design on Shirt Other
23. Painting on Metal
24. Painting on Wood
25. Painting on Cloth
26. Painting on Slate
27. Painting on Other
28. Models - Airplane
29. Models Car
30. Models - Rocket
31. Models - Truck
32. Models - Other
33. Stained Glass
34. Pottery - Thrown
35. Pottery - Hand Molded
36. Leather Item - Hand Tooled

37. Leather Item - Other
38. Wood Burning
39. Wood Carving - Dimensional
40. Wood Carving - Painted
41. Wood Carving - Relief
42. Wood Carving - Animal
43. Wood Carving - Figure
44. Wood Carving - Other
45. Woodworking - Turned
46. Woodworking - Inlay
47. Woodworking - Scroll Saw
48. Woodworking - Other
49. Metal Working
50. New From Used Materials
51. Other not listed

CLASS C - COLLECTIONS

Best of Class Rosette will be Awarded for Lots 1-22 and 23-30

Minimum of 6 pieces. Lots 2, 3 & 4 displayed in plastic holder, two (2) sheets only. Lots 5-22 must be on tray or board no bigger than 10" x 13".

1. Coins Displayed in Holder
2. Postage Stamps Displayed in Plastic Holder
3. Trading Cards Displayed in Plastic Holder
4. Postcards
5. Pens or Pencils
6. Salt and Pepper Shakers
7. Buttons
8. Promotional Buttons or Pins
9. Themed Promotional - Same type of item from different institutions
10. Themed Promotional- Same type of Institution, different items
11. Spoons
12. Thimbles or Souvenir Items from Traveling
13. Bells
14. Ornaments
15. Miniatures
16. Animals
17. Figurines
18. Indian Relics
19. Old Records
20. Huron County Fair Memorabilia
21. Most Unusual
22. Miscellaneous - Other than Above
23. Scrapbook Historical
24. Scrapbook Photo Album Only
25. Scrapbook Vacation or Sports Theme
26. Scrapbook Family or Personal
27. Scrapbook Pet
28. Scrapbook Huron County Fair
29. Scrapbook One Page Computer Generated
30. Scrapbook Other

CLASS D - ANTIQUES

Best of Class Rosette will be Awarded Lots 1-28 and 29-51

One item per category unless a set.

Must be at least 25 years old.

China can be of fine quality which is translucent to light or the type used for everyday use.

Entries 48, 49, 50 - 3x5 card with history is permissible.

1. Glassware - Clear
2. Glassware - Transparent Colored
3. Glassware - Opaque Colored
4. Glassware - Milk Glass
5. Glassware - Hobnail
6. Glassware - Carnival
7. Glassware - Frosted
8. Glassware - Depression - Clear
9. Glassware - Depression - Transparent Colored
10. Glassware - Depression - Opaque Colored
11. Glassware - Other
12. China - Cup and Saucer
13. China - Bowl or Plate - dinnerware
14. China - Platter or Other Serving Piece
15. China - Salt and Pepper
16. China - Sugar and Creamer
17. China - Vase
18. China - Any Other
19. Pottery - Cup and Saucer
20. Pottery - Bowl or Plate - dinnerware
21. Pottery - Platter or other serving piece
22. Pottery - Salt and Pepper
23. Pottery - Sugar and creamer
24. Pottery - Vase
25. Pottery - Other
26. Glass Bottles/Jars - Clear (3)
27. Glass Bottles/Jars - Transparent Colored (3)
28. Glass Bottles/Jars - Opaque Colored (3)
29. Silver - Single Piece or Set
30. Brass - Single Piece or Set

31. Cast Iron
32. Any Other Metal
33. Wood
34. Wall Decoration
35. Table Decoration
36. Lamp
37. Household Tool
38. Tool
39. Paperweight
40. Snowglobe or Music Box
41. Jewelry
42. Doll
43. Toy
44. Christmas Decoration - 1 to 3 Items
45. Book - School
46. Book - Other
47. Vintage Printed or Handwritten Paper Materials
48. Vintage Photograph - Must be 50+ Years Old
49. Vintage Clothing - Must be 50+ Years Old
50. Vintage Clothing Accessory - Must be 50+ Years Old
51. Other

CLASS E - CERAMICS, ETC.

Best of Class Rosette will be Awarded Lots 1-20

Artwork Must Be The Work of Exhibitor

Any Fired/Baked Type of Clay

1. Overglaze - Holiday Item
2. Overglaze - Animal
3. Overglaze - Figurine
4. Overglaze - Other
5. Underglaze - Holiday Item
6. Underglaze - Animal
7. Underglaze - Figurine
8. Underglaze - Other
9. Stain - Holiday Item
10. Stain - Animal
11. Stain - Figurine
12. Stain - Other
13. Dry Brush - Holiday Item
14. Dry Brush - Animal
15. Dry Brush - Figurine
16. Dry Brush - Other
17. Lustre or Gold - Any Item
18. Pearl Stain - Any Item
19. Airbrush - Any Item
20. Doll

CLASS F - YOUTH

Best of Class Rosette will be Awarded Lots 1-17 & 18-40

Artwork Must Be The Work of Exhibitor

Open to 14 years of age and under who have not entered Classes A-E. Exhibitors age may be written on entry tag.

Lots 1-12 must be mounted on stiff background (like Foamcore) or framed. Lots 24, 25 & 26 minimum of 6 items, displayed in plastic holder, two (2) sheets only. Lots 27, 28, 29 & 30 minimum of 6 items, and must be on tray or board no bigger than 10"x 13".

1. Oil Painting - Any Subject
2. Acrylic - Any Subject
3. Watercolor - Any Subject
4. Charcoal or Chalk - Any Subject
5. Pencil and/or Ink - Any Subject
6. Black and White Photo - Any Subject
7. Color Photo - Any Subject
8. Photo Grouping - Any Subject (3 to 6 photos)
9. Digital Black & White Photo - Any Subject
10. Digital Color Photo - Any Subject
11. Digital Grouping - Any Subject (3 to 6 photos)
12. Poetry Written by Youth
13. Woodworking
14. Woodcarving
15. Woodburning
16. Pottery
17. Ornaments
18. Models - Airplane
19. Models - Car
20. Models - Rocket
21. Models - Truck
22. Models - Other
23. Collections - Coins Displayed in Holder
24. Collections - Postage Stamps
25. Collections - Trading Cards
26. Collections - Postcards
27. Collections - Pen and/or Pencils
28. Collections - Miniatures
29. Collections - Antiques
30. Collections - Other
31. Scrapbook
32. Ceramics - Stain
33. Ceramics - Dry Brush
34. Ceramics - Other
35. Table Decoration
36. Wall Decoration

37. Any Other Craft
38. Building with Legos - Single Item
39. Building with Legos - Scene (Maximum size 12" x 18", Must be mounted on tray or board).

Department No. 21 PHOTOGRAPHY

2011 Theme "Photos Around the Firelands"

Entries close July 31st

MINDY BORSICK, SUPERINTENDENT
516 Old State Road, North Fairfield, Ohio 44855
Phone (419) 744-2243

Kevin Palm, Asst. Superintendent
(419) 744-2227

EXHIBIT LOCATION - Please note - Open Class Photography will be exhibited in the EXPO/COMMERCIAL BUILDING, not in the hobby building.

ENTRIES:

- A) Photography Department entries will be accepted by mail until **July 31**. Entries for this department close (with all other entries on) **July 31**.
- B) If you are under 18 or a Junior Fair Exhibitor you are welcome to exhibit in the Open Class Photography judging. (Jr. Fair exhibitors please use the open class entry form and check 4-H or FFA exhibitor as indicated.)
- C) Entry Tags - All exhibitors in the Photography Department must pick up entry tags from the Secretary's Office before bringing them for entry to the Expo Building.
- D) Competition is open to all counties except those closed to Huron County
- E) Bring in exhibits:
Sunday, August 14 1 PM - 4 PM
Expo/Commercial Building

GENERAL RULES:

PLEASE READ ALL RULES CAREFULLY.

Any entry that is received late or does not comply with the below rules, even though shown, will be judged in the competitive judging, but will not qualify for a placement award.

1. The fair provides entertainment of a wholesome nature for the entire family; therefore exhibits containing nudes, promoting drug usage or paraphernalia, or containing socially objectionable material will not be accepted. Due to the open viewing audience fair officials also reserve the right to deny entry to any photograph. If you have any questions call the superintendent or the faire officer.

2. All entries shall be **an original photograph by the exhibitor** (processing, printing and mounting excluded) and not previously shown or exhibited in the Huron County Fair's Open Class Photography Department.

3. All entries shall be 8x10 or 8x12 size, Except where designated in Class D.

4. All prints must be placed in a clear plastic sheet/page protector.

5. No over or under mounting is permitted. Just the print should be in the protector.

6. Entry tags must be affixed to the bottom, right-hand corner, prior to entering. Do not tape sheet/page protectors together they should be original size with photo inside. No supplies will be provided by superintendents.

7. Entries are limited to two (2) per entry number, per exhibitor.

8. Ribbons will be awarded at the discretion of the judges.

9. All prize money is 1st Place \$4.00, 2nd Place \$3.00, 3rd Place \$2.00, 4th Place \$1.00. Best of Class Rosettes - Class A, B, C, & D. Best of Class D - Entries 9 and 10 Award donated by **K & H Construction, Norwalk** and Rosette and the Best of Show Award donated by **Penny Pennell, State Farm Agent in Willard**.

10. All entries are eligible for Best of Show.

11. Photographs will be judged by the following criteria: Presentation; Print Quality; Composition; Focus; and Creativity.

12. If you have any questions or concerns please contact one of the show superintendents prior to the fair.

13. Release time is the Sunday (after the fair) 9 AM - 12 Noon.

PLEASE NOTE: PRINTS EXHIBITED ARE ON PUBLIC DISPLAY DURING OPERATING HOURS OF THE BUILDING, BUT WILL NOT BE SUPERVISED AT ALL TIMES.

CLASS DESCRIPTIONS:

Portrait / Person - A photograph, planned or candid, but obviously of a single (1) person in the photograph.

Portrait / Person - A photograph, planned or candid, but of two or more people.

Still Life - A planned and arranged photograph of inanimate objects.

Scenic / Picturesque - A photograph in which the subject is shown in a broad view, such as a landscape, seascape, cityscape, etc.

Action / Sports - A photograph that depicts an obvious action and/or sport participated in by the subject.

Nature - A photograph of any natural object that does not show the obvious hand of man or man-made objects.

Pet - A photograph in which the primary subject is obviously a pet (i.e.: domestic cat, dog, fish, etc.).

Animal - A photograph in which the primary subject is obviously an animal or insect (i.e. zoo animal, farm animal, wild animal, etc.).

Building Only - A photograph in which the primary subject is obviously a building. This may be either the interior or exterior of a building.

Floriculture / Floral Shapes - Any print that obviously shows trees, fungus, a grouping of flowers, greenery or other floriculture (i.e.: Home garden, public garden or park, etc.). Close-up or macro images should be entered at the entry provided below.

Miscellaneous - A photograph that does not fit any of the above classes.

SPECIALTY - Class D - Descriptions provided at each individual entry number.

CLASS A - COLOR PHOTOGRAPHY (Film/Non-Digital)

1. Portrait/Person
2. People/Group
3. Still Life
4. Action-Sports
5. Nature
6. Scenic/Picturesque
7. Pet or Animal
8. Building Only
9. Floriculture/Floral Scapes
10. Miscellaneous

CLASS B - BLACK & WHITE / SEPIA PHOTOGRAPHY (Non-Digital / Digital)

1. Portrait/Person or People/Group
2. Scenic/Picturesque
3. Action-Sports
4. Nature, Floriculture/Floral Scapes
5. Pet or Animal
6. Miscellaneous

CLASS C - DIGITAL PHOTOGRAPHY

1. Portrait/Person
2. People/Group
3. Still Life
4. Scenic/Picturesque
5. Action-Sports
6. Nature
7. Floriculture
8. Pet
9. Animal
10. Building Only
11. Miscellaneous

CLASS D - SPECIALTY CLASS

(Color, Black & White and Digital Photographs will compete in Classes)

1. Our Vacation
This class will promote places you've traveled to on your recent vacation.
2. Huron County Landmark
Look around! We have plenty of Landmarks in Huron County.
3. My Camera
A print showing something you can do with your camera or lense. (Long Exposure, Spot Focus, etc.)

4. Close-Up Views

Get out your macro lenses and close-up filters and have some fun. This class is to promote any single image taken with a close up point of view.

5. Photo Ad

Take a photo of something to advertise. May include written copy.

6. Memories of Old

A current photograph obviously showing a momento of history. This may fall into any of the above categories, but must be accompanied by a card or page of written copy describing why the subject in the photo holds historic value.

7. My Favorite Park

Back by popular request. Enter your favorite park photo.

8. It's Fair Time!

Enter your favorite 2009 fair photo, end of the fair shot, or choose one preparing for this year's event.

9. Visit the Animals (Lagoon Deer Park or African Wildlife Park)

During last year's fair we announced this photo opportunity. Now is your chance to enter the photographs you captured.

10. A Look Back (Historic Lyme Village or Mad River & NKP Railroad Musuem)

This was the second special class announced during last year's fair.

Department No. 22 GRANGE EXHIBITS

ROLAND TKACH, SUPERINTENDENT
4653 State Route 60, Wakeman, Ohio 44889
Phone (440) 839-9511

Exhibits must be placed by 8:00 A.M. Monday and remain there until release on Sunday at 8:00 A.M. Local Huron County Granges exhibiting will each receive a premium of \$100.00. Also a Rosette for 1st, 2nd, 3rd and 4th place.

1. All products shall be of current year with the exception of corn and grain not fully mature, which may be either current or previous year.

2. Decorations of the booths should be of natural products as much as possible without creating a fire hazard. These will be given consideration when attractiveness is scored.

3. Judges will follow the score card closely. Overlook no opportunity to get every point possible.

4. In all cases quality will be given in preference over quantity.

5. All items must be labeled and local winner of State and National Contests named.

6. State and National Contest items only, to be displayed in Culinary, Contests named.

7. Bible and Gavel to be displayed with Bible neatly covered with clear cover.

SCORE CARD

Use of General Theme (exhibit built on State Theme)	150
Originality (in presentation and materials used)	100
Attractiveness (ability to attract and hold attention-neatness)	100
Presentation of Grange Teachings (ideals and principles of the Grange)	100
Your Grange's Community Service Work (10 points for each support of local, state and national project)	150
Farm Products (ear corn, small grains, grasses and legumes - no more than 5 each)	70
Garden and Orchard Products (Fresh fruits and vegetables, no more than 20 varieties) (Canned fruits and vegetables, limit 20 units) (Jelly, jams, limit 6 varieties)	70
Culinary (State Baking Contests - 20 points each for each contest)	60
Domestic Sewing & Fine Arts (State and National Sewing and Needlework Contest item - 20 points each)	100
Talent, Scrapbook or Award (any skit, scrapbook, talent, or contest entered where you could receive an award, display item entered or award given, if Talent 1st Winner and talent 20 points each item).....	100

ATV / GOLF CART / FOUR-WHEELER RULES

1. All vehicle operators must obtain permit from the Huron County Fair Board.
2. Permits are available at the Fair Secretary's Office.
3. Cost of permit is \$25.00, non-refundable. Permit must be displayed on front of vehicle at all times while operating.
4. Only the person obtaining the permit shall operate vehicle.
5. All drivers must be 21 years of age.
6. All drivers must show proof of off-premise insurance.
7. Vehicles may only be used between the hours of 11:00 P.M. and 10:00 A.M.
8. Speed shall not exceed 5 MPH.
9. Any violation of rules will result in immediate removal of vehicle from premises. Driver s Permit will be revoked.
10. All emergency vehicles are exempt.

NO WEAPONS

Unless otherwise authorized by law, pursuant to the Ohio Revised Code, no person shall knowingly possess, have under the person's control, convey or attempt to convey a deadly weapon or dangerous ordnance onto these premises (ORC 2923.1212). A valid license to carry a concealed handgun does not authorize the licensee to carry a weapon onto these premises.

Violators will be prosecuted.

Posted by Order of the Board of Huron County Commissioners

ROOSTER CROWING CONTEST
SATURDAY, AUGUST 20, 2011
7:00 A.M. - PICKWORTH JUDGING PAVILION

Sponsored By:
Premier Builders, Plymouth

SUPERINTENDENTS
Gary Palm (419) 744-2464
Jean Bernard (419) 752-2275

- Entries must be in the hands of Fair Office by 12:00 noon, Friday, August 19, 2010. There is a \$1.00 fee per entry.
- Limit: 2 birds per owner. Owner to furnish cages and covers.
- Only one rooster will be permitted in each cage. No other bird may accompany competing bird during the contest.
- Rooster may be of any breed, any age. Cages are suggested to be single unit cages and be twice as high as rooster. Cages will be covered at 7:00 A.M. at the ring prior to contest.
- A judge will be assigned to each coop to tally the number of times the bird crows in half-hour after the coops are uncovered. No one other than the judges will be allowed in the contest area during the contest.
- \$10.00 will be awarded to the first place winner if that bird crows more than 96 times, the current Northeast Ohio Fairs Rooster Crowing Record.
- Anyone that enters will be treated to a Continental Breakfast.
- All participants are encouraged to bring a helper, son, daughter, grandson, granddaughter, nephew, niece, etc. and their helper will also get breakfast.

PONY PULL CONTEST
WEISENBERGER ARENA
WEDNESDAY - 7:00 P.M.

- This event shall be under the direct supervision of the directors and officers duly elected for the current year of The Central Ohio PonyPulling Association, Inc.
- All rules of entry and contest shall be that of the above Association for the current year.
- Following are premiums offered in each of the Light and Heavy classes:

1st.....	\$100.00
2nd.....	\$75.00
3rd.....	\$65.00
4th.....	\$60.00
5th.....	\$45.00
6th.....	\$40.00
7th.....	\$35.00
8th.....	\$30.00
9th.....	\$25.00
10th.....	\$25.00

Check out the Fair Website
for activities all year long!

www.huroncountyfair.com



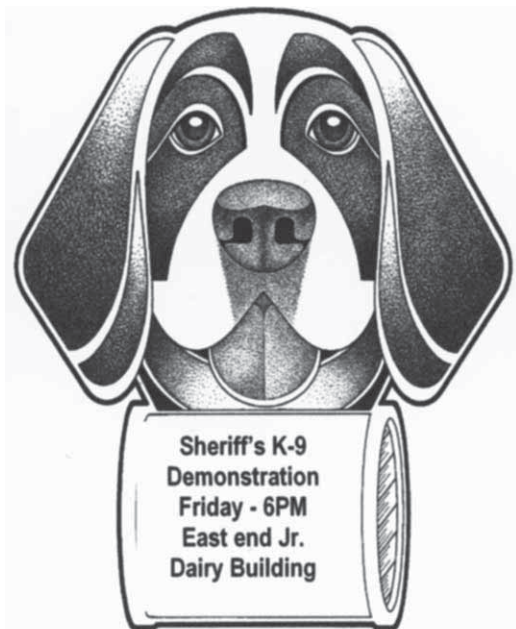
**See The Fair
From The Air!**

Remax Hot Air Balloon
Weather Permitting
Tuesday 6-8 PM
\$3 per ride

**All proceeds benefit the
Huron County
Junior Fair**

A special thanks to these Remax Quality
Realty agents sponsoring this event.

Anita Cundari,
Tina Hormel
Pat Spettel,
Frank VanDresser



Huron County Agricultural Society
940 Fair Road
Norwalk, OH 44857

ADDRESS SERVICE REQUESTED

PRSR STD
U.S. POSTAGE
PAID
NORWALK, OH 44857
PERMIT NO. 136



Our Expo Building Is Available To Rent For:

- Weddings
- Craft Shows
- Company Parties
- Bingo
- Awards Banquet
- Any Special Occasions

**Serving Kitchen with Separate Bar
Heat & Air Accommodates 400+ Guests**

Phone 419-744-2225
www.huroncountyfair.com

- Camping spaces with full hookups available in season for overnight guests
- Campgrounds with pavilion also available for rallies or family reunions